



ACCESSORIES • UPGRADES • REPLACEMENT PARTS

CATALOG

FOR 2007-2018 JK WRANGLER™



VOLUME 5

Crown Automotive Sales Co., Inc. / RT Off-Road is not affiliated with FCA US, LLC or STELLANTIS N.V.

Jeep® is a registered trademark of FCA US, LLC.

Wrangler™ is a trademark of FCA US, LLC.

Part numbers listed in this catalog are used for reference purposes only. No implication is made that the actual products sold are the product of the original equipment manufacturer.

Reference to a manufacturer in the catalog does not indicate that the manufacturer is the source or sponsor of the listed product. All products listed in this catalog are being sold without any sponsorship or approval of any auto manufacturer.

This catalog is intended for fast reference use. While every effort has been made to ensure correctness of the applications listed, we cannot guarantee accuracy due to many model changes and superseding of part numbers.

Crown Automotive Sales Co., Inc. makes no representation as to the dimensions, assemblies and/or calculations herein, and we will not be liable to any third party should any of the information contained within this catalog be in error.

Copyright © 2022 Crown Automotive Sales Company Inc. All rights reserved.





Accessories And Upgrades

Soft Tops, Covers, &	
Top/Door Hardware	4
Seat Covers	12
Exterior Accessories	13
Steel Bumpers & Body Armor	14
Suspension	19
Drivetrain	22
Brakes	24
Wheel Spacers/Adapters	28
Transmission/Fuel/Exhaust	29
Lighting	30
Electrical	35
Vehicle Recovery	38
Fuel & Water Storage	41
Interior Accessories	42
Stainless & Related Accessories	48



Replacement Parts

Axle	58
Drive Shaft	66
Clutch	68
Cooling	69
Body	72
Lighting	80
Mirrors	81
Electrical	83
Filters	86
Fuel	87
HVAC	88
Engine	89
Brakes	95
Wheel	98
Wiper	99
Exhaust	100
Steering	101
Suspension	102
Automatic Transmission	104
Transfer Case	106
Manual Transmission	107
Emissions	107
Lock Cylinders & Keys	107



OEM STYLE REPLACEMENT SOFT TOPS

RT Off-Road's OEM Style Replacement Soft Tops are a perfect way to replace a worn and drafty top with foggy windows and broken zippers. These direct replacement fabric tops include tinted windows. Factory frames and hardware must be reused.

- 30 mil Pressed Polished Windows
- 31% Tint
- Scoop-Count Zippers



JK WRANGLER

Color	Year	Product Description	Part #
NEW	07-12	2-Door; Full Steel Doors	RT10935T
Black Diamond 18 oz. Oxford Fabric	13-18	2-Door; Full Steel Doors	RT11135T
	07-09	4-Door; Full Steel Doors	RT11035T
	10-18	4-Door; Full Steel Doors	RT11235T
Black Diamond 30 oz. Sailcloth Fabric	07-09	2-Door; Full Steel Doors	RT10535T
	07-09	4-Door; Full Steel Doors	RT10635T



FOLD BACK BOWLESS SOFT TOP

RT Off-Road's Bowless Soft Top installs directly over the factory roll bar. It requires no additional supports and still maintains a snug fit. This design allows for larger side windows to improve visibility. When the side and rear windows are removed, the top converts into an open air safari top. This top also has a fold back sun roof feature and tinted windows.

07-18 JK WRANGLER

Color	Product Description	Part #
Black Diamond	2-Door with Tinted Windows	RT10735T
	4-Door with Tinted Windows	RT10835T



BOWLESS SOFT TOP

RT Off-Road's Bowless Soft Top installs directly over the factory roll bar. It requires no additional supports and still maintains a snug fit. When the side and rear windows are removed, the top converts into an open air safari top.



07-18 JK WRANGLER

Color	Product Description	Part #
Black Diamond	2-Door with Tinted Windows and Storage Pockets	BRT20035T
	4-Door with Tinted Windows and Storage Pockets	BRT20135T



COMBO BEACH TOPPERS

RT Off-Road's Combo Beach Toppers allow occupants to enjoy the open air feel while staying protected from direct sunlight or an unexpected rain shower. Each kit is designed to be a versatile system, allowing for partial or full interior coverage. Windshield channels may be required and are sold separately.

07-18 JK WRANGLER

Color	Product Description	Part #
Black Mesh	2-Door	CB30011
	4-Door	CB30111
Black Diamond	2-Door	CB30035
	4-Door	CB30135
Khaki Diamond	4-Door	CB30136

WINDBREAKER

RT Off Road's Windbreakers deflect the air behind the driver and passenger seats, creating a more pleasant environment for conversation and listening to music. They mount behind the front seats to the factory roll bar and extend to the floor, reducing wind, moisture, and dust from entering the passenger compartment.

07-18 JK WRANGLER

Color	Product Description	Part #
Black Diamond	2 or 4-Door	WB20035

CB30035



CB30011



CB30136



WB20035



FULL COVERS

RT Off-Road's Water Resistant Covers are designed to protect the vehicle from sun, dirt, dust, moisture, and pollution. The cover is also breathable enough to reduce moisture and temperature buildup. Includes cover, lock, cable, and storage bag.



07-18 JK WRANGLER

Color	Description	Part #
Gray	2 Door	FC10209
	4 Door	FC10309

CAB ONLY COVERS

RT Off-Road's Cab Covers were designed for a tight fit that will last for years. The elastic bottom and straps will keep the cover tight to the body. The compact design provides easy storage when not being used.

07-18 JK WRANGLER

Color	Product Description	Part #	
Gray	Fits over factory soft or hard top. Water-resistant.	Full 2-Door	CC10509
		Full 4-Door	CC10609
	Waterproof with bottom door flaps. Secures to body with elastic bottoms and straps.	Full 2-Door	CC10709
		Full 4-Door	CC10809

CC10509



CC10709



DOOR SURROUND KITS

RT Off-Road's Door Surround Kit is a direct fit replacement for the factory door surround. RT Off-Road's Door Surrounds are able to fit factory soft tops, replacement tops, and bowless soft tops. Includes all hardware needed for installation and instructions.

07-18 JK WRANGLER

Color	Description	Part #
Black	2 Door without Sunrider Top	RT25001
	4 Door without Sunrider Top	RT25002



FREEDOM TOP PANEL STORAGE BAG

The Freedom Top® Panel Storage Bag is a dual compartment storage system. The outside is constructed out of a durable canvas material, while the inside is lined with a soft cloth to protect the hard top panels. Designed to fit behind the rear seat.

07-18 JK WRANGLER

Color	Part #
Black	SB40001



TIRE COVERS

Protect your spare tire from the elements with a RT Off-Road Tire Cover. The elastic slip-on design allows for easy installation while still maintaining a tight fit. The canvas material protects expensive tire and wheel combinations from corrosive road chemicals, salts, and UV light.

UNIVERSAL

Color	Tire Size	Part #
Black	30"-32"	TC303201
Black Denim	30"-32"	TC303215
Black Diamond	33"-35"	TC333535

Color	Tire Size	Part #
Gray	30"-32"	TC303209
Spice	30"-32"	TC303237
	33"-35"	TC333537



SOFT TOP RETAINERS

A direct replacement for missing, damaged, or stolen tailgate retainers. Sold individually and are specific for driver or passenger side. Connects soft top to tailgate for weather tight seal.



07-18 JK WRANGLER

Description	Replaces Part #
Right	68041620AA
Left	68041621AA



SOFT TOP STORAGE BAG

Protect your soft top with RT Off-Road's Soft Top Storage Sleeves. Installs quickly and easily around the soft top with no special tools. Available in multiple colors for a direct match to soft top material.

07-18 JK WRANGLER

Color	Door	Part #
Black Diamond	2-Door	SB20035
	4-Door	SB30035
Khaki Diamond	2-Door	SB20036
	4-Door	SB30036



WINDSHIELD CHANNEL

RT Off-Road's Windshield Channel is designed for aftermarket beach toppers, combo toppers, and bowless replacement tops. Installs to factory windshield frame and includes all hardware needed for installation.

07-18 JK WRANGLER

Description	Part #
No Drill	RT26067



RT26067

SEAT COVERS

These durable polycanvas Seat Covers are custom made for a snug fit. The front Seat Covers have a built-in side air bag pocket for added safety. There are zippered mesh pockets on the front and sides of the seat for convenient storage. Large rear pockets offer additional storage. Custom fit Headrest Covers are included. Heavy duty straps and clips make installation easy.

JK WRANGLER

Year	Color	Description	Part #
07-10	Black & Gray	Front	SC30021
07-11	Black & Gray	Rear 2-Door	SC30121
		Rear 4-Door	SC30221



CB RADIO ANTENNA MOUNT

Allows any JK owner to easily mount a CB antenna to their tailgate. It mounts to the tailgate using the spare tire mount holes. No drilling necessary.



07-18 JK WRANGLER

Color	Description	Part #
Black	Included is a textured black powder coat bracket and the necessary mounting hardware.	RT26074

SPARE TIRE CARRIER SPACER

Mount an oversized spare wheel and tire to the OE spare tire mount with RT Off-Road's Spare Tire Spacer. It raises the spare tire & wheel up 2" and spaces it out 2" resulting in improved ground clearance as well as increased tire clearance to the tailgate. Up to 1.5" of left or right wheel offset is provided to allow for the use of other bolt-on accessories.



07-18 JK WRANGLER

Description	Part #
Features textured black powder coat; Includes all necessary mounting hardware.	RT26076

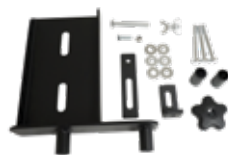


OFF-ROAD JACK MOUNT

RT Off-Road's Off-Road Jack Mount allows any JK owner to easily mount an off road Jack to their tailgate. Included is a textured black powder coat bracket and the necessary mounting hardware. It mounts to the tailgate using the tailgate hinge holes. No tools are required to remove and install the Off-Road Jack for use. Drilling of the tailgate covers is required.

07-18 JK WRANGLER

Description	Part #
<ul style="list-style-type: none"> • Textured Black Powder Coat Bracket • Mounts to the tailgate brackets using existing holes • Includes Hardware • Requires drilling to tailgate bracket covers 	RT26083



HEAVY-DUTY REAR BUMPER



RT Off-Road's Rear Bumper is constructed of 3/16" plate steel and is protected with a durable textured black powder coat finish. Includes mounting points for D-Rings and a large recess for oversized tire clearance.

07-18 JK WRANGLER

Position	Part #
Rear	RT20014

HEAVY DUTY TUBE BUMPER

Introducing RT Off-Road's Front Rock Crawler Bumper. This heavy duty winch-ready bumper will eliminate any possibility of damage to the grille and fender area of the Jeep® as well as functioning as a recovery point. Installation is as simple as removing the factory bumper and installing the Rock Crawler Bumper.

07-18 JK WRANGLER

Color	Position	Description	Part #
Black Textured	Front	Accepts most winches up to 9,000 lbs. 2 D-Ring Mounts. Full fender-to-fender protection. Easy No-Drill Installation.	RT20015



HEAVY-DUTY PLATE STEEL BUMPERS

RT Off-Road's Front Bumper is a heavy duty plate steel constructed upgrade over the factory bumper. The 3/18" plate steel and tubular steel construction is protected with a durable textured black powder coat. Bumper includes winch mount, winch fairlead mounting holes, D-Ring mounts with D-Rings, and additional holes for mounting lights. Includes all hardware needed for installation, installs into factory locations, and does not require any drilling or modification.

07-18 JK WRANGLER

Description	Part #
<ul style="list-style-type: none"> • Front Bumper (Stubby) • Plate Steel with Durable, Textured Black Powder Coat Finish • Integrated D-Ring Mounts • Winch Ready • Features Two 4-Inch Light Receptacles 	RT20040



07-18 JK WRANGLER

Description	Part #
<ul style="list-style-type: none"> • Front Bumper (Full Width) • Plate Steel with Durable, Textured Black Powder Coat Finish • Integrated D-Ring Mount • Winch Ready • Features Two 4-Inch Light Receptacles 	RT20041



FRONT TUBE BUMPER

RT Off-Road's Double Tube Bumper design is sure to freshen up the look of your vehicle. This Tube Bumper is constructed out of 3" diameter tubing with a durable powder coat finish. The design allows for the use of the existing factory holes and require no additional drilling or modifications. Mounting hardware is included.

07-18 JK WRANGLER

Position	Part #
Front	RT20018



LICENSE PLATE BRACKET

The bracket snaps onto the winch roller fairlead and allows the use of the winch with a small tug on the bracket.

UNIVERSAL

Color	Description	Part #
Black	Included is a flat black powder coated bracket, 2 fairlead clips, and hardware.	RT26075



ROCKER PANEL GUARD SET

RT Off-Road's Heavy Duty Rocker Panel Guard Set is a required upgrade for serious rock crawling off-road enthusiasts. The heavy duty tube construction protects the vehicle from rocks, trees, and all other obstacles one may encounter on the trail. It features a textured black powder coat finish that will provide years of protection. Kit includes both driver and passenger Rocker Panel Guards, all hardware needed to install, and installation instructions.

07-18 JK WRANGLER

Description		Door	Part #
Rocker Panel Guard Sets	<ul style="list-style-type: none">• Heavy Duty Tube Steel Construction• Textured Black Powder Coat• Mounting Hardware Included• No Drilling Required	2-Door	RT20028
		4-Door	RT20029



TUBE SIDE STEPS

RT Off-Road's Side Steps will make entering and exiting the vehicle much easier as well as improving side protection from obstacles. Installation is a breeze using the factory body mounting bolts to mount the Steps to the vehicle. Each Kit includes left and right steps, mounting brackets, hardware, and installation instructions.

- Durable, black powder coat finish
- No-Slip flats for entering and exiting the vehicle
- 3" Diameter Tubes
- Works with vehicles with (or without) a body lift
- Easy No-Drill Installation

RT26059



07-18 JK WRANGLER

Description	Part #
2 Door; Black Semi-Gloss	RT26059
4 Door; Black Semi-Gloss	RT26058
2 Door; Black Textured	RT26061
4 Door; Black Textured	RT26060



RT26058



RT26061



RT26060



FRONT SKID PLATE



RT20043

10-18 JK WRANGLER

Description

Black Semi-Gloss Powder Coat Finish; 3/16" Plate Steel Construction; Drilling not required; Includes all hardware needed for installation

Part

RT20043

Replace the factory plastic brush guard with a Heavy Duty Plate Steel Skid Plate. Keep the electronic sway bar disconnect and steering components safe from rocks, brush, and any potential contact. Direct bolt-in design using existing holes. Designed for use with aftermarket bumpers.

EVAP SKID PLATE



Remove any concern when traversing an obstacle by installing an RT Off-Road Evap Skid Plate in place of the flimsy factory sheet metal vapor canister skid plate. It is a direct bolt-in design using existing skid plate holes. All the factory lines and wiring will still reach the vapor canister so there is no danger for pesky check engine lights.

07-11 JK WRANGLER

Description

Matte Black Powder Coat Finish; 3/18" Plate Steel Construction; Drilling not required; Includes all hardware needed for installation

Part

RT20023

FENDER FLARES

Give any JK a fresh look while increasing the tire clearance for improved suspension articulation with a Fender Flare Kit from RT Off-Road. Each Flare is manufactured of steel and is finished with a textured black powder coat. Included in each kit are 4 Fender Flares and all the hardware needed for installation.

07-18 JK WRANGLER

Description

- Increases Tire Clearance for Improved Suspension Articulation
- Steel Construction
- Textured Black Powder Coat Finish
- Includes 4 Flares and All Hardware

Part

RT26085



SPACER LIFT KIT

Improve the look and off-road performance of your vehicle with RT Off-Road's Lift Kit. This Kit lifts the vehicle 1 3/4", improving ground clearance allowing the use of oversized tires.

- Fits all available JK models
- Black Polyurethane construction

07-18 JK WRANGLER

Description	Part #
1 3/4" Lift	RT21035



SHOCK BAR PIN ELIMINATOR KIT

NEW

Converts bar pin mounting to double-shear mounting while also lowering the frame end of the shock 1" for increased strength and bushing life. Also allows for the use of a more universal shock absorber.

07-18 JK WRANGLER

Description	Part #
Rear, Upper, Left & Right	RT27068



DROP PITMAN ARM

Improve steering performance with RT Off-Road's Drop Pitman Arm. Lifting your Jeep® without addressing the steering angles often times results in bump steer and decreased turning radius. Installation of this Drop Pitman Arm will reduce the operating angle of the drag link, resulting in improved steering feel and less wear on steering parts. Each Arm is designed to bolt in place of the factory piece with no interference issues.

07-18 JK WRANGLER

Description	Part #
LHD, up to 6" Lift	RT21036



SHOCK BRACKET SET

Replace the ripped, bent, or broken front or rear axle side shock brackets with RT Off-Road's Shock Bracket Set. They can be easily modified to fit several other size tubes for a truly universal fitment. They are designed to mount the shock bushing parallel to the axle tube with enough space for oversized shock bodies to clear the axle tube.

UNIVERSAL

Description	Part #
3/16" Mild Steel brackets designed to fit a 3" axle tube; Features 1/2" bolt hole; Sold in pairs	RT25003



HEAVY DUTY STEERING STABILIZER

RT Off-Road's HD Steering Stabilizers are a perfect way of smoothing out any unwanted steering inputs from bumps in the road. Each kit features an oversized steering stabilizer with polyurethane bushings.

07-18 JK WRANGLER

Description	Part #
LHD	RT21051



ADJUSTABLE CONTROL ARM SETS **NEW**

Improve your Jeep's drivability with a set of RT Offroad's Heavy Duty Adjustable Control Arm Sets. Each arm is constructed of 2" DOM Tubing finished with a matte black powder coat. The control arms feature a zinc coated forged end with 1.25" threads designed for heavy use. Each end features OE-style rubber bushings to retain the factory ride quality while still offering some articulation. The adjustability of these control arms will allow the caster and pinion angle to be tuned to factory specifications. Each kit includes a pair of fully assembled control arms.

07-18 JK WRANGLER

Description	Collapsed	Extended	Part #
Front Upper Control Arm Set	18.75"	20.75"	RT21058
Front Lower Control Arm Set	22.5"	24.5"	RT21059
Rear Lower Control Arm Set	19.5"	21.5"	RT21057

Note: For JK's with 0" to 6" of Lift



HEAVY DUTY BALL JOINT SET

The “Heavy Duty” description is more than accurate with these Ball Joints. The newly designed Joint is leaps ahead of the OE with inner plastic bushings plagued with premature failure. These HD Ball Joints were manufactured with sintered metallic bushings. This new bushing is highly resistant to wear and damage. The assembly is greasable to extend the life of the already durable inner bushings, which are specifically engineered for vehicles with larger tires, lift kits, and heavier accessories. They install without any fabrication or modification to the factory mounts using tools that can be purchased or rented at a local parts store. The HD Ball Joints are also backed with an industry leading 12 month warranty.

07-18 JK WRANGLER

Description	Part #
<ul style="list-style-type: none"> • Heavy Duty Replacement of Factory Ball Joints • Heavy Duty Inner Sintered Metallic Bushings • Greasable • Includes All Hardware Needed for Installation • Sold In Sets (Must Order two sets to complete one front axle) 	RT21002



SINTERED METAL BUSHINGS



HEAVY-DUTY DIFFERENTIAL COVERS

Protect valuable differentials with a Heavy-Duty Differential Cover from RT Off-Road. These Covers are constructed of 3/8" high-grade forged steel with a raised fill plug for extra oil capacity. They feature strengthening ribs to ensure a broken or peeled differential cover doesn't cut the day short. The mating surface is machined flat to ensure a leak-free fitment. All Covers are finished in a red or black powder coat and include flanged hex bolts as well as RTV.

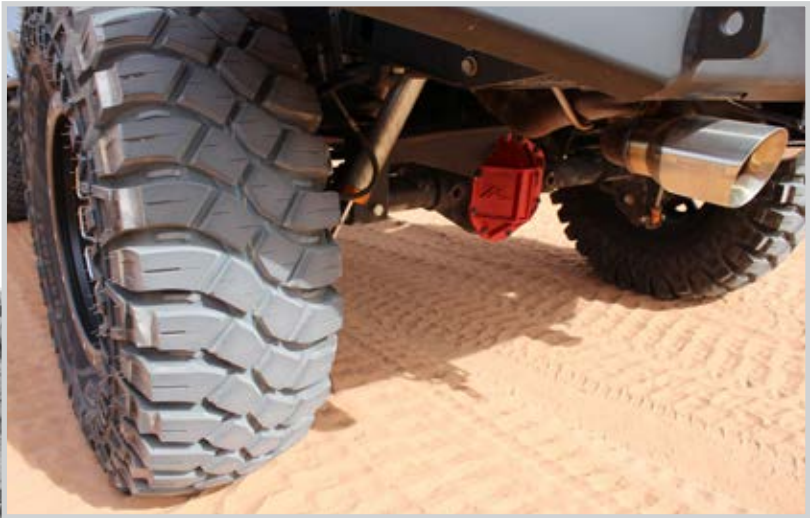
- Constructed of 3/8" Forged Steel
- Mating surface machined flat to prevent leaks
- Raised fill plug for increased oil capacity
- Powder Coated Red or Black

RTV and Cover Bolts Included



UNIVERSAL

Year	Description	Position	Color	Part #
07-18	D30 HD Differential Cover	Front	Red	RT20024
			Black	RT20030
2007	D35 HD Differential Cover	Rear	Red	RT20025
			Black	RT20031
07-18	D44 HD Differential Cover Modifications necessary w/ Rubicon Package	Front or Rear	Red	RT20026
			Black	RT20032





RT20024



RT20025



RT20026



RT20030



RT20031



RT20032



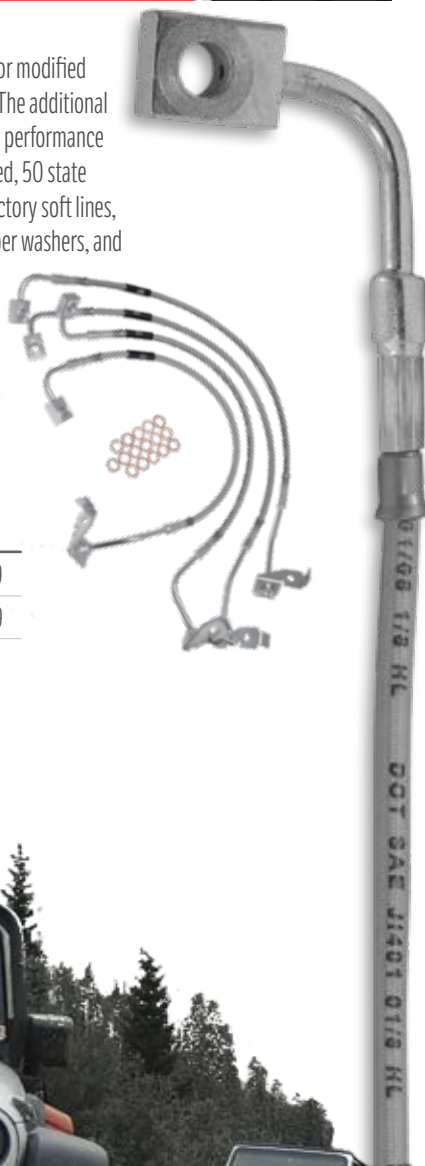
STAINLESS STEEL BRAKE LINE KIT

RT Off-Road Stainless Steel Brake Lines are designed for modified vehicles requiring additional length and performance. The additional length and stainless construction provides long lasting performance on modified vehicles. All Brake Lines are D.O.T. approved, 50 state legal. Each Kit includes stainless lines to replace the factory soft lines, mounting brackets, junctions blocks (if required), copper washers, and mounting hardware.

- Braided Stainless Steel Construction
- D.O.T. Approved
- Includes everything needed for installation

JK WRANGLER

Year		Description	Part #
07-10	NEW	Up to 6" Lift	RT31029
11-18		Up to 6" Lift	RT31049



BIG BRAKE KITS

RT Off-Road Big Brake Kits are the solution to the strain that oversized wheels and tires place on the braking system on any JK Wrangler. These Brake Kits feature calipers with a pair of 64mm pistons for increased clamping forces, resulting in increased piston area over the single piston calipers. The vented brake rotors give the braking system greater leverage. The end result of the Big Brake Kit when compared to OE brakes is a 22% shorter 60-0 distance! A 17" wheel is required. Brake Master Cylinder (Replaces Part #68091278AB) is also recommended for better brake pedal feel and greater braking performance. Wheel Spacers (Part # RT32004 or RT32013) are required when used with "Moab" Wheels, (identified by 5 large spokes.)

- Dual-Piston Calipers (Front Only)
- The front rotors are 13"
- The rear rotors are 13.5"
- Full Bolt-On
- No cutting, welding, or spacers required
- Includes everything needed for installation



RT31047

07-18 JK WRANGLER

Description	Part #
Front - With Solid Rotors	RT31046
Front - With Drilled & Slotted Rotors	RT31047
Front Replacement Rotors (Drilled and Slotted) NEW	RT31044
Rear NEW	RT31057
Rear Replacement Rotor	RT31048



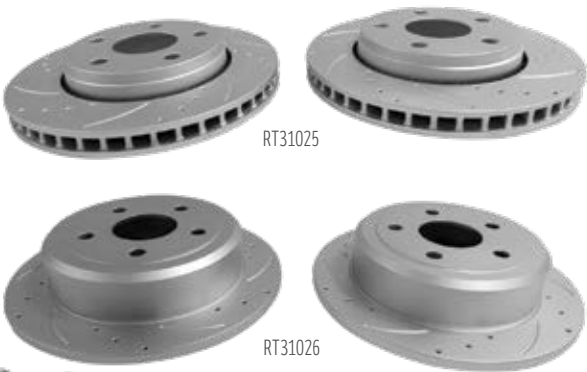
RT31057

HIGH PERFORMANCE BRAKE ROTORS

High Performance Brake Rotors Sets from RT Off-Road are designed for the most extreme abuse. These Brake Rotors were tested on: the steep descents in Moab, Utah; stop-and-go traffic in Boston, Massachusetts; and the long-range treks in-between. Each Brake Rotor is machine slotted and cross-drilled to provide maximum cooling. This rapid cooling helps eliminate brake fade and potential warping. The design rapidly expels friction gases, debris, and water from the rotor and pad surface. You can expect greater braking response, increased performance, longer life, and a sporty new look. Includes left and right Rotors.

07-18 JK WRANGLER

Description	Part #
Front; With 11.89" Diameter Rotors	RT31025
Front; With 13" Diameter Rotors	RT31044
Rear	RT31026



COMPLETE BRAKE KITS WITH DRILLED & SLOTTED ROTORS

High Performance Brake Kits couple our cross-drilled and slotted rotors with brake pads and a hardware kit which includes boots, springs, and pins. Replacing the pins and boots on your calipers will ensure that they will function at peak performance alongside the rotors. We offer everything needed to maximize braking performance, all in one box.

07-18 JK WRANGLER

Description	Part #
Front; With 11.89" Diameter Rotors	RT31027
Rear	RT31028



RT31027



RT31028



WHEEL SPACER KITS

Achieve an aggressive look and improved stability with a Wheel Spacer Kit from RT Off-Road. These 1.5" thick Spacers are an affordable option to add additional backspacing or expand the wheel options on a specific vehicle. Each Wheel Spacer starts as a 6061 T6 Aluminum blank and is then machined to be hub-centric and wheel-centric to ensure proper fitment. They are finished in anodized blue or black to ensure a long-lasting life. Each Kit is sold complete with 10 lug nuts, grade 8 studs, and thread locking compound.

07-18 JK WRANGLER

Color	Description	Part #
Blue	5-on-5" Bolt Pattern	RT32004
Black	5-on-5" Bolt Pattern	RT32013
Replacement Stud		RT32017



HEAVY DUTY TRANSMISSION OIL COOLER KIT

- Direct Bolt-In Design
- Tube and Fin Construction
- Clean Factory Look
- Helps Prevent Transmission from Overheating

07-11 JK WRANGLER

Description

Part

With 3.8L Engine with Automatic Transmission

RT24006



THROTTLE BODY SPACER KITS

Improve the performance and fuel economy in any Jeep® vehicle with an RT Off-Road Throttle Body Spacer Kit. The heart of this kit is a black anodized aluminum spacer that is designed to provide a smoother, faster, and more dense air charge resulting in an increase in horsepower, torque, and fuel economy. Also included in the kit is a gasket and mounting hardware. This kit works with both factory and aftermarket air intake systems.

JK WRANGLER



RT35006

Years	Engine	Part #
07-11	3.8L	RT35006
12-18	3.6L	RT35007
14-18	3.0L Gasoline	RT35007
12-18	Replacement Gasket for RT35007	RT35007G

EXHAUST SPACER KIT

Create the clearance needed to fully droop the front suspension on a 2012+ JK Wrangler with RT Off-Road's Exhaust Spacer Kit. The Spacers bring the front exhaust pipe back and down to prevent the front driveshaft boot from contacting the exhaust. Included in each kit are 2 Spacers and the necessary hardware. Bolt-in installation.



- Increases clearance between exhaust and front driveshaft boot
- Spacers feature ball flange for a leak-free fit
- Bolt-In Installation
- Includes 2 Spacers and hardware

JK WRANGLER

Years	Engine	Part #
12-18	3.6L	RT36003
14-18	3.0L Gasoline	RT36003

LED LIGHT BARS

The body of each Lamp is constructed of durable die cast aluminum with a polycarbonate lens. The Philips LEDs in each Lamp produce an impressive amount of light without the need to upgrade the charging system of the vehicle.

- Matte black anodization
- An IP86 rating, 50,000 hour LED bulb life
- Includes universal mounting brackets with stainless steel hardware and full wiring harness

UNIVERSAL

Description	Part #
21.5" x 3.5" x 3"; 40 LEDs; 7,200 Lumens	RT28083
51.5" x 3.5" x 3"; 96 LEDs; 17,280 Lumens	RT28084

07-18 JK WRANGLER

Description	Part #
21.5" LED Light Bar w/ Hood Bracket Kit	RT28092
Hood Bracket Kit for 21.5" LED Light Bar	RT28087
51.5" LED Light Bar w/ Windshield Bracket Kit	RT28093
Windshield Bracket Kit for 51.5" LED Light Bar	RT28088



RT28083

RT28084



RT28093



LED CUBE LIGHTS

These Durable 3" Cube Lights are made of a die cast aluminium body with a Polycarbonate Lens. Each Cube features 4 5-watt Philips LEDs that produces 1236 lumens.

- Universal mounting brackets with stainless steel hardware included
- Includes wiring pigtail

RT28085



RT28086



UNIVERSAL

Description	Part #
3" Cube Flood Light	RT28085
3" Cube Spot Light	RT28086

LED HEADLIGHTS

Upgrade the look and output of the factory headlights on any JK with a LED Headlamp Kit by RT Off-Road. Each lamp is constructed of a diecast aluminum body with a polycarbonate lens. The 6 Osram LEDs in each lamp produce 2,400 lumens on low beam and 3,200 lumens on high beams, resulting in an impressive amount of light without the need to upgrade the charging system of the vehicle. A 30,000 hour LED life means that these lamps are designed to last, even in the harshest conditions. Included is a pair of LED Headlamps with H4 connectors, a pair of CANBUS modules, and a pair of H4 to H13 adapters. No cutting or splicing is necessary.

07-18 JK WRANGLER

Description	Part #
7" LED Headlight Set	RT28104



LED TAIL LIGHTS

07-18 JK WRANGLER

Description	Part #
Clear Lens w/ Red LED Bulbs & Black Bezels	RT28112
Red Lens w/ White LED Bulbs & Black Bezels	RT28111



LED FOG LIGHT SET**NEW**

Each lamp is constructed of an diecast aluminum body with a polycarbonate lens. The 6 LEDs in each lamp produce an impressive amount of light without the need to upgrade the charging system of the vehicle. A 30,000 hour LED life means that these lamps are designed to last, even in the harshest conditions. Included is a pair of LED Fog Lights with 9005/9006 connectors and a pair of 9005/9006 to bare wire adapters. Bolts in with cutting or splicing on various models.

10-12 JK WRANGLER;
13-18 JK WRANGLER w/ Plastic Bumper

Description	Part #
LED Fog Light Set w/ Black Bezels & Polycarbonate lens w Reflectors	RT28107

**LED PARKING LIGHT SET****NEW**

Equip your vehicle with an LED Parking & Turn Signal Light Set by RT Off-Road. Each lamp is constructed of an plastic body with a smoked polycarbonate lens. The 8 LEDs in each lamp produce an impressive amount of light without the need to upgrade the charging system of the vehicle. A 30,000 hour LED life means that these lamps are designed to last, even in the harshest conditions. Included is a pair of LED Parking & Turn Signal Lights. Bolts in with cutting or splicing.

07-18 JK WRANGLER

Description	Part #
LED Parking Light Set w/ Smoked Lenses	RT28108



LED HEADLIGHT BULB SET

Each bulb features 4 Cree LEDs that produce 1500 lumens at only 16.8 watts, resulting in an impressive amount of light without the need to upgrade the charging system of the vehicle. A copper weave cloth is used as a heat sink in place of a noisy and failure prone fan. The color output from these bulbs is 6500k. Included are 2 direct-fit LED Headlamp Bulbs. No cutting or splicing is necessary.

07-18 JK WRANGLER

Description	Part #
H13 LED Headlight Bulb Set	RT28056



H4 TO H13 ADAPTER

07-18 JK WRANGLER

Description	Part #
H4 Headlight to H13 Plug Adapter with anti-flicker module	RT28098



LED FOG LAMP BULB - PAIR



UNIVERSAL

Description	Part #
H10	RT28047
PSX24	RT28049

LED MINIATURE BULBS - PAIR

UNIVERSAL

Description	Part #	Description	Part #
194	Amber	921	White
	Cool White	1157	Amber
	Red		White
3157	Amber		
	White		



LED DOME LIGHTS

Brighten your vehicle's interior with a set of LED Dome Lights by RT Off-Road. A 50,000 hour LED bulb life means that these lamps are designed to last the life of the vehicle. No cutting or splicing is necessary.



RT28042



RT28043

JK WRANGLER

Year	Description	Part #
07-18	2-Door Each light features 2 Nichia LEDs that produce 800 lumens at only 9 watts; Includes 2 LED lights	RT28042
11-18	4-Door Each light features C.O.B. (Chip on Board) LED's, resulting in an impressive amount of light without the need to upgrade the charging system of the vehicle.; Includes 3 direct Fit LED Dome Lights	RT28043

CLEAR PARKING LAMPS & SIDEMARKER LAMPS

The RT Off-Road Crystal Clear Lighting Packages are a D.O.T. legal way to give the vehicle an all new look. These crystal clear Lenses come complete with amber Bulbs. The Bulbs and Lenses included in our kit will install directly into the factory wiring harness and body. Installation requires no modifications to the body and can be completed with basic hand tools.

JK WRANGLER

Year	Description	Part #
07-13	2 Parking Lamps and 2 Amber Bulbs	RT28029
	2 Parking Lamps, 2 Side markers, and 4 Amber bulbs	RT28018
07-18	2 Sidemarker Lamps and 2 Amber Bulbs	RT28028



RT28018

LED LICENSE PLATE BOLT LIGHT SET

Cleanly and conveniently illuminate a remote mounted license plate without adding additional brackets with RT Off-Road's LED License Plate Bolt Light Set. Included are a pair of stainless steel bolts with 2 LEDs on the head of each bolt. Requires wiring as they ship with terminated wires.

UNIVERSAL

Description	Part #
LED License Plate Bolt Light Set	RT28102



HEADLIGHT CONNECTOR

NEW

RT Off-Road's Headlight Connectors are the perfect solution for anyone needing to repair or change a headlight plug. This H13 connector ships pre-pinned with 8" long 16-gauge wires that are pre-terminated for easy installation. It can be used to replace a damaged H13 connector or to change headlight plugs to an H13 style plug. Sold individually.

07-18 JK WRANGLER

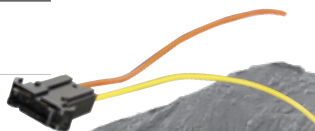
Description	Part #
H13 Harness Connector	RT28110



FUSE HOLDER

UNIVERSAL

Description	Part #
Panel Mount Fuse Holder for ATO Fuses; Ships with a loop of terminated wire	RT29011



TRAILER HITCH HARNESS

Easily wire a trailer hitch up to any JK without the need for cutting, drilling, or splicing with RT Off-Road's Trailer Hitch Harness. This 4-pin harness is a plug and play installation that tees into the driver's side tail light wiring. Included in the kit are a trailer harness with OE-style connectors, zip ties, and a boot for the 4-pin trailer connector.

07-18 JK WRANGLER

Part #

RT29005



SWITCH PLATES

RT Off-Road's Switch Plates are the perfect solution to adding switches to any application. The plate measures 8" x 3", the ideal dimensions for a single DIN radio slot. They're constructed of stainless steel with a mounting hole at each corner. Mounting hardware is not included.

UNIVERSAL

Description	Part #
3 Rocker Switches; Each plate ships with three 20A Carling Contura II SPST Switches pre-installed	RT29006
1 Power Socket and 2 Rocker Switches; Each plate ships with two 20A Carling Contura II SPST Switches and a marine-grade power socket pre-installed	RT29007
2 Power Sockets; Each plate ships with two marine-grade power sockets pre-installed.	RT29009



ROCKER SWITCHES

UNIVERSAL

Description	Part #
16A Round Rocker Switch (SPST)	RT29010
20A Rocker Switch (SPST)	RT29012



RT29012



RT29010

12V POWER SWITCHES

Easily add a marine-grade power socket to any vehicle with RT Off-Road's Power Socket. Each Socket ships with 2 pop rivets for installation and a rubber cover to help weatherproof the socket.



UNIVERSAL

Description	Part #
Marine Grade; Rated at 20 AMPs	RT29008

STUBBY ANTENNA

RT Off-Road's Shorty Antenna is the optimal way of eliminating the eyesore and the potential damage caused by the factory antenna. The flexible antenna is coated with black rubber and measures 13" long (22" shorter than the OE antenna), perfect for avoiding damage from tree limbs. Radio reception will not be affected with the shorter antenna. Installs in a matter of minutes.

- Flexible
- Excellent Reception
- Rubber Coating
- 13" Long (22" Shorter Than OE)
- Easy Installation

07-18 JK WRANGLER

Description	Part #
13" Stubby Antenna	RT27060



VEHICLE RECOVERY KIT

The RT Off-Road Vehicle Recovery Kit is the most convenient collection of recovery parts available. This kit contains everything needed to complete a complex winching operation as well as individual items that will aid in more simple situations. All items are stowed away in a heavy duty polyester bag. Be prepared and have the right tools ready for vehicle recovery.

- Includes: Recovery Strap, Tree Saver, Snatch Block, Two D-Rings, Winch Line Dampener, Gloves, and a Recovery Bag
- The Recovery Tow Strap is rated for 20,000 lbs. and features leather-wrapped ends.
- The Tree Saver is rated for 30,000 lbs. and is used to guarantee the well-being of trees when recovering with a winch.
- Leather-Palmed Gloves and a winch line dampener are added to increase the safety of all persons using this kit.
- The Recovery Bag is oversized to accommodate for storage of additional accessories.

UNIVERSAL

Description	Part #
1. Complete Vehicle Recovery Kit	RT33013
A. Recovery Leather-Palmed Gloves	RT33020
B. Snatch Block Kit	RT33017
C. Recovery Tow Strap (2" X 30')	RT33018
D. Tree Saver Strap (3" x 6')	RT33019
E. Recovery Storage Bag	RT33022
F. (2) D-Rings	RT33005



TRIFOLD SHOVEL

RT Off-Road's Tri-Fold Shovel is a great tool to have available while trying to recover a stuck vehicle. The durable black powder coat finish will keep it rust-free through years of use. It measures 9" long when folded and 23" when extended. No tools are necessary to collapse or extend it. A black nylon storage bag is included for safe stowage.

UNIVERSAL

Description	Part #
Trifold Shovel	RT33016



D-RING AND RECEIVER KITS

RT Off-Road's Recovery Accessories are a high quality, high value, collection of products. Designed and produced to ensure a strong, safe, and durable point to recover or couple. All metal Recovery Products are either powder coated black or galvanized steel to protect the product for years of use.

All Receivers are 2" and D-Rings are 3/4" unless otherwise stated.



Description	Part #
Stainless Steel D-Ring	RT33002
Galvanized Steel D-Ring	RT33001
5/8" Stainless Steel D-Ring	RT33003
1 Receiver and 3 D-Rings	RT33011
1 Receiver and 2 D-Rings	RT33010
1 Receiver and 1 D-Ring	RT33009
2 D-Rings	RT33005

D-RING SPACERS AND KITS

Description	Part #
1 Rubber Spacer	RT33007
2 Rubber Spacers	RT33008
1 Stainless Steel D-Ring with spacers	RT33004
1 Receiver and 1 D-Ring with spacers	RT33012
2 D-Rings with spacers	RT33006

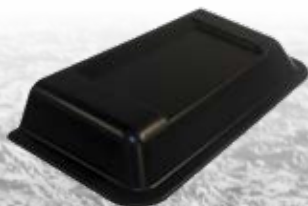


COWL SCOOP

RT Off-Road's Cowl Scoop maximizes the efficiency of HVAC systems. The Scoop design increases air flow through the vehicle's vents, improving the performance of both the heating and air conditioning systems.

07-18 JK WRANGLER

Description	Part #
Black Plastic Cowl Scoop	RT26073





JERRY CANS

Description	Part #
Red—5.4 gallon metal can includes a plastic pour spout, vent, and a travel cap. DOT COMPLIANT, UN approved. US Forest Service accepted.	RT26010
Olive—5.4 gallon metal can includes a plastic pour spout, vent, and a travel cap. DOT COMPLIANT, UN approved. US Forest Service accepted.	RT26009

Note: Universal Mount, Part #RT26012 (Zinc Finish and Lockable) sold separately.



RT26009

REPLACEMENT PARTS FOR JERRY CANS

Description	Part #
Cap	RT26011
Vent Cap	RT26014
Spout	RT26013



RT26011

RT26014



RT26013

JERRY CAN MOUNTS

Description	Part #
Mounting Bracket	RT26012
Mount with strap	RT26088



RT26012



RT26088

BLUE WATER CAN

RT Off-Road's Blue Water Can is constructed of powder coated steel with a food-grade liner to prevent contamination of the liquid inside. The top features an O-ring and a lock pin to prevent leakage even in the most intense, off-camber situations.

Description	Part #
<ul style="list-style-type: none"> Powder Coated Blue Food-Grade Liner O-Ring Cap w/ Locking Pin Will work with traditional Jerry Can mounts 	RT26020



TRAIL CAN UTILITY TOOL BOX



Description

- The same finish and dimensions as a standard 5 gallon Jerry can (18"x13"x6").
- Steel construction with a durable red powder coated finish.
- Contains two removable drawers, one lift out tray, and built in lock and key.

Part

RT26019

FIRE EXTINGUISHER HOLDER



Description

Handy Fire Extinguisher Holder attaches to any roll bar or sports bar up to 3" diameter. Holds a 3 lb. extinguisher (not included). Attaches with adjustable hook and loop straps. Available in red only.

Part

RT27005



FLASHLIGHT HOLDER



Description

Hook and loop straps are used to affix to any roll bar up to 3". Uses a single hook and loop strap to quickly remove any D-Cell flashlight.

Part

RT27043

DRINK HOLDER SET



Description

Includes a pair of insulated Drink Holders designed to hold a variety of bottle and can sizes. They mount via hook and loop straps to any vehicle with roll bars up to 3"

Part

RT27044

GRAB BAR SETS

Description	Part #
-------------	--------

Deluxe Handles with molded rubber grips, heavy-duty vinyl straps, three-loop design, and heavy-duty hook and loop straps.	RT27007
---	---------



Description	Part #
-------------	--------

Heavy-Duty Handles with molded rubber grips, triple sewn nylon straps, three loop design, hook and loop straps, and a metal buckle for strength and durability.	RT27048
---	---------



Description	Part #
-------------	--------

Economy Handles with soft vinyl foam grips and adjustable two-loop design.	RT27006
--	---------



STEEL GRAB HANDLE SETS



RT Off-Road's Grab Handle Sets are a perfect and simple way of adding a hard-mounted handle to the front and back seat area of a JK Wrangler. The heavy duty, high-strength steel construction results in a sturdy and reliable handle. These handles are finished in a durable textured black powder coat with rubberized plastic grips.



07-18 JK WRANGLER

Description	Part #
Front Grab Handle Set	RT27049
Rear Grab Handle Set	RT27058
Front and Rear Grab Handle Set	RT27063

DOOR GRAB HANDLE SET

07-18 JK WRANGLER

Description

- Includes 2 Handles
- Black nylon / rubber construction

Part

RT27046



LED SUPERBRIGHT UTILITY LIGHT

Description

Universal application. Attaches to roll bar with hook and loop straps. Light also has a magnetic strip that will attach to metal when removed from the hook and loop strap. Takes 3 AAA batteries, not included.

Part

RT28007



CLINOMETERS

RT Off-Road's Clinometers are an awesome way of ensuring that passengers are safer while off-road. They include a roll gauge which will tell how off-camber the vehicle is at all times, along with a pitch gauge which will show how steep of an incline or decline is being conquered. These Clinometers are easy to install and adjust using the included adhesive backed base. Fits all vehicles.

Description

Part

Roll and Pitch Gauge with CJ Graphics

RT27003

Roll Gauge, Pitch Gauge, and Compass with JK Wrangler™ Graphics

RT27045



RT27003



RT27045

STORAGE DASH TRAY

- Replaces the existing panel on top of the dash and perfectly matches the original dash color and finish.
- Accommodates cell phones, keys, navigation, loose change, sunglasses, and more.
- No drilling required.

07-10 JK WRANGLER

Description	Part #
Black Plastic Dash Tray	RT26073



11-18 JK WRANGLER

Description	Part #
Black Plastic Dash Tray w/ Phone Holder	RT27059



ROCK KEY BLANKS

These rugged looking Keys are licensed replacements for stock Jeep® keys. They complement the Jeep®'s famous "trail-rated" capabilities.



07-18 JK WRANGLER

Description	Color	Part #
Transponder	Spice	RT27012

DELUXE LOCKING CENTER CONSOLES

Constructed of 16ga steel with a gray powder coat hammered finish, this locking console compartment lid features stainless steel hinges and a padded armrest covered in marine-grade vinyl.

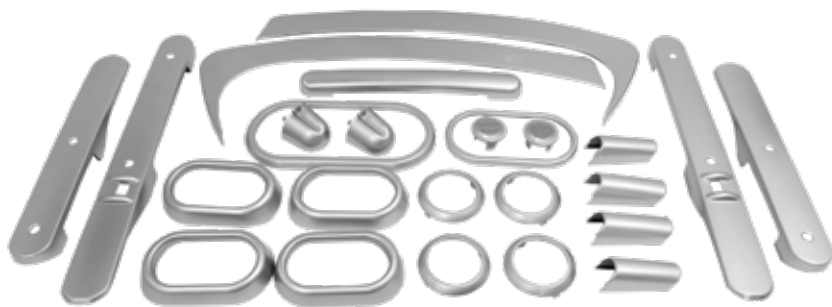
07-10 JK WRANGLER

Transmission	Description	Part #
Automatic Transmission	Includes 2 front cup holders and 2 rear cup holders. Installed in each console are 3 rocker switches, 1 power socket, 2 round switches, 3 fuse holders, and waterproof LED lighting; all which are pre-wired . Bolt-in with OE mounting hardware. Includes keys.	RT27051
Manual Transmission		RT27052
Replacement Armrest pad	Marine Quality Vinyl	RT27055



INTERIOR TRIM PIECES

These Trim Accents install in minutes with double sided tape or by snapping in place. Each piece is constructed out of durable injection molded plastic and finished in either chrome or brushed silver. Trim pieces are available in a complete kit or individually.

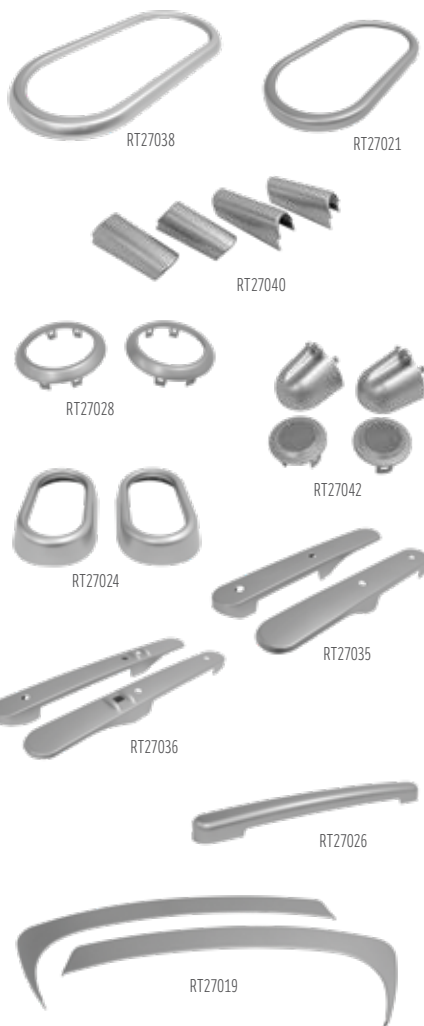


RT27032



07-10 JK WRANGLER

Description	Color	Part #
Complete 2-Door Kit	Chrome	RT27029
	Silver	RT27031
Complete 4-Door Kit	Chrome	RT27030
	Silver	RT27032
Shifter Bezel	Chrome	RT27037
	Silver	RT27038
Steering Wheel Spokes	Chrome	RT27039
	Silver	RT27040
A/C Vent Cover (2)	Chrome	RT27027
	Silver	RT27028
Speaker Cover (2)	Chrome	RT27041
	Silver	RT27042
Cup Holder Trim	Chrome	RT27020
	Silver	RT27021
Grab Handle Cover	Chrome	RT27025
	Silver	RT27026
Rear Door Handle Cover (2)	Chrome	RT27033
	Silver	RT27035
Front Door Handle Cover (2)	Chrome	RT27034
	Silver	RT27036
Front or Rear Door Handle (2)	Chrome	RT27023
	Silver	RT27024
Center Console	Chrome	RT27018
	Silver	RT27019



ENTRY GUARD SETS

Improve the look of your vehicle and protect it at the same time. RT Off-Road's Door Entry Guards are constructed out of corrosion-resistant 304 stainless steel and are polished to a high-gloss finish. They cover up scratched door openings and protect against any future damage caused by passengers entering and exiting the vehicle. Uses double-sided tape to install.

07-18 JK WRANGLER

Description	Part #
2-Door; Stainless Steel	RT34072
2-Door; Black	RT26049
4-Door; Stainless Steel	RT34073
4-Door; Black	RT26050



FUEL DOORS

Finish the look of a vehicle with RT Off-Road's Fuel Door. Available in both polished or black powder coat aluminum. Available with or without lock mechanism. Includes all hardware needed for installation.

07-18 JK WRANGLER

Color	Lock	Part #
Black	Non-Locking	RT26053
	Locking	RT26054
Polished Aluminum	Non-Locking	RT26051
	Locking	RT26052



HOOD CATCH KITS

Improve the look of any Jeep with RT Off-Road's Hood Catch Kit. This kit is designed to bolt in place of the OE hood catches. All necessary hardware is included for installation.

07-18 JK WRANGLER

Color	Description	Part #
Stainless Steel	Pair	RT34075



LOCKING HOOD CATCH KITS

Bolt on security for the engine compartment and under hood accessories with a Locking Hood Catch Kit from RT Off-Road. Included with each kit is a pair of black powder coat 304 stainless steel Hood Catches, a set of pre-installed lock cylinders with keys, and all necessary hardware. Hood flutter, a very common problem with all Jeep® JKs, is eliminated by omitting rubber from the construction of the kit. This kit fits in place of the factory hood catches; a no-drill installation.

07-18 JK WRANGLER

Color	Description	Part #
Black Stainless Steel	Pair	RT26057



DOOR HINGE BUSHING KITS

Easily replace the worn out or sticky door hinge bushings on any JK Wrangler with RT Off-Road's Door Hinge Bushing Kit. Each bushing is machined from a piece of genuine DuPont™ Delrin® to perfectly fit into the door hinges. Installation is as simple as removing the factory corroded and worn bushings using the included tool, cleaning the hinge, and sliding the new bushings in their place.



07-18 JK WRANGLER

Model	Part #
2 Door	RT25004
4 Door	RT25005

DOOR HINGE SETS

RT Off-Road's Stainless Steel products offer optimal fit and finish while maintaining superior function. All Brackets, Hinges, and hardware are produced from corrosion-resistant stainless steel.

07-18 JK WRANGLER



Color	Description	Part #
Stainless Steel	4 Hinges; Full or Half Door	RT34071
	8 Hinges; Full or Half Door	RT34079
	4 Body Hinges; Full or Half Door	RT34070
	8 Body Hinges; Full or Half Door	RT34069



RT34079



DOOR HANDLES



- Stainless Steel Construction
- Highly polished finish
- Fits Full or Half Doors and Tailgate
- Includes all hardware needed for installation.



07-18 JK WRANGLER

Quantity	Description	Part #
1	Individual	RT34002
2	2-Door	RT34003
3	2-Door Plus Tailgate	RT34004
4	4-Door	RT34005
5	4-Door Plus Tailgate	RT34006

TUBE-DOOR HANDLE SET

NEW

RT Off-Road Paddle-Style Door Handle Set is specifically designed for use with fabricated doors. Integrated into each handle is an exterior handle, interior handle, and latch assembly. The bolt spacing is 3" x 3.25".

07-18 JK WRANGLER

Color	Part #
Textured Black	RT26084



GRILLE INSERTS

Complete the look of the factory grille with RT Off-Road's Grille Inserts. Each kit includes snap-in chromed plastic or black plastic Inserts. Kits include everything you need for installation.

07-18 JK WRANGLER

Color	Part #
Chrome Plastic	RT26055
Black	RT26056



RT26055



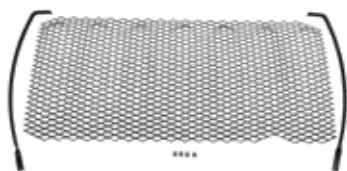
RT26056

3D GRILLE INSERTS

- Protects the Radiator
- Steel Wire Mesh Construction and Gloss Black Powder Coat Finish with Polished Highlights
- Brackets and Hardware Included; Mounts to the rear of the OE grille
- 3D Design

07-18 JK WRANGLER

Color	Part #
Black 3D	RT26077
Black 3D with Polished Highlights	RT26078



RT26077

TAIL LIGHT GUARDS SETS

07-18 JK WRANGLER

Color	Style	Part #
Stainless Steel	Euro	RT34081
Black	Euro	RT28002
Stainless Steel	Traditional	RT34080
Black Stainless	Traditional	RT34102



RT34081



RT28002



RT34080



RT34102



RT34102

WINDSHIELD TIE DOWN KIT

- Stainless Steel Construction
- Highly polished, corrosion-resistant finish
- Includes all hardware needed for installation
- Includes two windshield bumpers, one hood mounted footman loop

07-18 JK WRANGLER

Color	Part #
Stainless Steel	RT34097



LIFTGATE GLASS HINGE SET

RT Off-Road's Stainless Steel products offer optimal fit and finish while maintaining superior function. All brackets, hinges, and hardware are produced from corrosion resistant stainless steel. Designed to use with the factory plastic hinge covers.

07-18 JK WRANGLER

Color	Part #
Stainless Steel	RT34104



HOOD SETS

RT34076



07-18 JK WRANGLER

Color	Part #
Stainless Steel, Includes: Two Hinges and Hardware	RT34100
Stainless Steel, Includes: Two Hinges, One Footman Loop, Two Hood Stops, and Hardware	RT34076



HOOD VENT COVER

07-18 JK WRANGLER

Color	Part #
Stainless Steel	RT34078



COMPLETE HOOD SET

07-18 JK WRANGLER

Color	Part #
Stainless Steel	RT34077



LIGHT MOUNT BRACKET SET

Auxiliary Light Windshield Mounting Bracket Set

Easily add auxiliary lights with RT Off-Road's Windshield Light Mount Brackets. The brackets mount to the vehicle using existing holes in the windshield frame. Each set is finished in a rich gloss black powder coat. Kit includes all hardware needed for installation. An antenna bracket and grommet are also included to eliminate any possibility of the antenna contacting the lights.

07-18 JK WRANGLER

Color	Part #
Windshield Mount, Black	RT28003



50" LED Light Bar Windshield Mounting Bracket Set

Easily add a 50" LED Light bar to the windshield of any JK Wrangler with a Light Bar Windshield Bracket Set from RT Off-Road. Each bracket is CNC cut, formed and finished with a durable textured black finish. They are designed for use with any 50" wide LED light bar with side mounts. Includes all hardware necessary to install. No cutting or drilling necessary.



07-18 JK WRANGLER

Color	Part #
LED Light Bar Windshield Mount, Black	RT28088

21.5" LED Light Bar Hood Bracket Set

Each bracket is CNC cut and formed and finished with a durable textured black finish. They mount on top of the factory hood hinges and include rubber isolators to protect the painted hinges as well as mounting hardware. They are designed for use with any 21.5" wide LED light bar with side mounts.

07-18 JK WRANGLER

Color	Part #
LED Light Bar Hood Mount, Black	RT28087



MIRROR RELOCATION BRACKET SET

Remove the doors from a Jeep without removing mirrors with RT Off-Road's Mirror Relocation Brackets. This kit includes a pair of brackets that install into existing holes in the windshield frame. A pair of door inserts are also included to cover the holes from the moved bracket on JK models. Both the brackets and the inserts are finished in a rich black powder coat.



07-18 JK WRANGLER

Color	Part #
Black	RT30016

Note: Without Power Mirrors

TRAIL MIRRORS



UNIVERSAL

Description	Replaces Part #
Two black powder coated 8"x6" Mirrors, two Arms, and all hardware to mount	RT30005
One black powder coated 8"x6" Mirror, one Arm, and all hardware to mount	RT30004



RT30005

QUICK RELEASE MIRRORS

RT Off-Road's Quick Release Mirrors are a great solution for those who want to drive without doors, but require side view mirrors. The gloss black powder coated brackets mount directly to the side of the upper windshield hinge. The included mirror arms and heads attach to the brackets with a thumb screw to allow for a quick release. Each Kit includes two mirrors, two arms, two brackets, and all hardware needed to mount it to the vehicle.

UNIVERSAL

Description	Replaces Part #
6" Round Mirrors, two Arms, two Brackets, all hardware to mount	RT30020
6" Rectangular Mirrors, two Arms, two Brackets, all hardware to mount	RT30021
Replacement Mirror Heads for RT30020; Round	RT30022

RT30022



RT30021



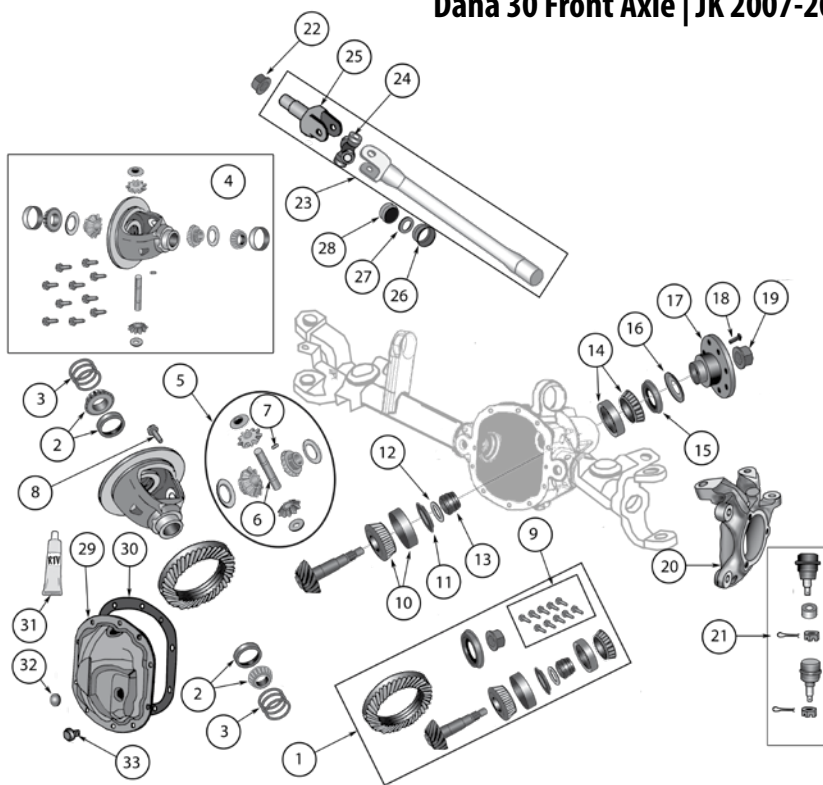
RT30020





Replacement Parts for JK Wranglers™



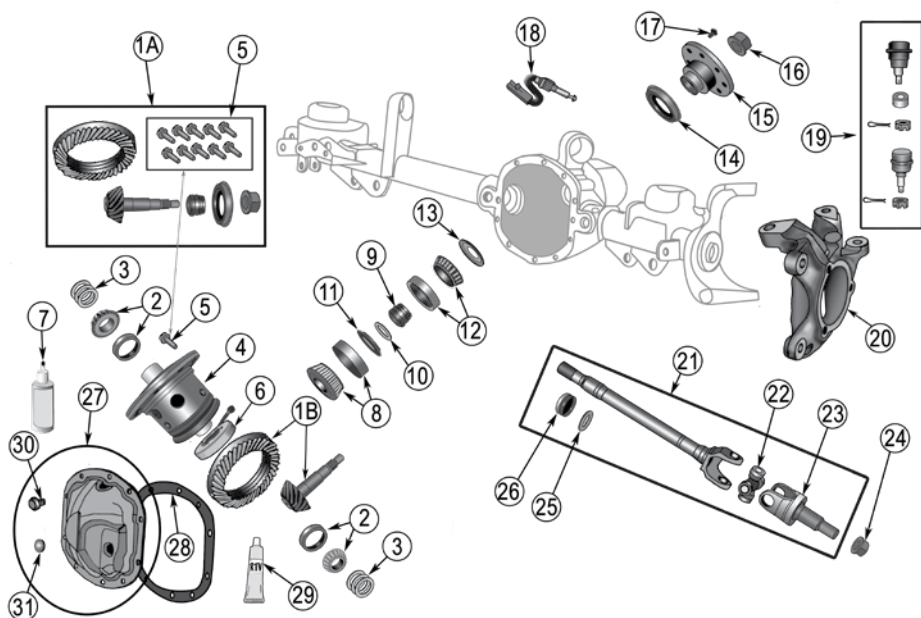


Item #	Description	Years	Comments	Replaces Part #
1	Ring & Pinion Set	07/18	3.21 Ratio	68004071AB*
		08/18	3.73 Ratio; Includes Item #s: 9, 13, & 19	68019333AB
		2007	4.10 Ratio; Includes Item #s: 9, 13, & 19	68004094AB
		07/18	4.56 Ratio	D30456JK
		07/18	4.88 Ratio	D30JK488
2	Bearing Set, Carrier	07/18	Includes 2 Bearings & 2 Cups	J8126500
3	Shim Set, Carrier	07/18	.109" - .148"	5066539AA
4	Case Assembly, Differential	07/18	3.21 Ratio	68004074AA*
		07/18	3.73, 4.10, 4.56, 4.88 Ratio	68026549AA
5	Gear Set, Differential	07/18	Includes Gasket & Ring Gear Bolts	68004075AA
6	Shaft, Differential	07/18		5003840AA
7	Pin, Differential Shaft	07/18		J0636360
8	Bolt, Ring Gear	07/18	Each; 3/8"-24 x .81"	J0649454
9	Bolt Kit, Ring Gear	07/18	Includes (10) 3/8" Bolts	4720891
10	Bearing Set, Pinion	07/18	Inner; Includes Bearing & Cup	4746979

*This Part # not currently carried by Crown Automotive

Dana 30 Front Axle | JK 2007-2018

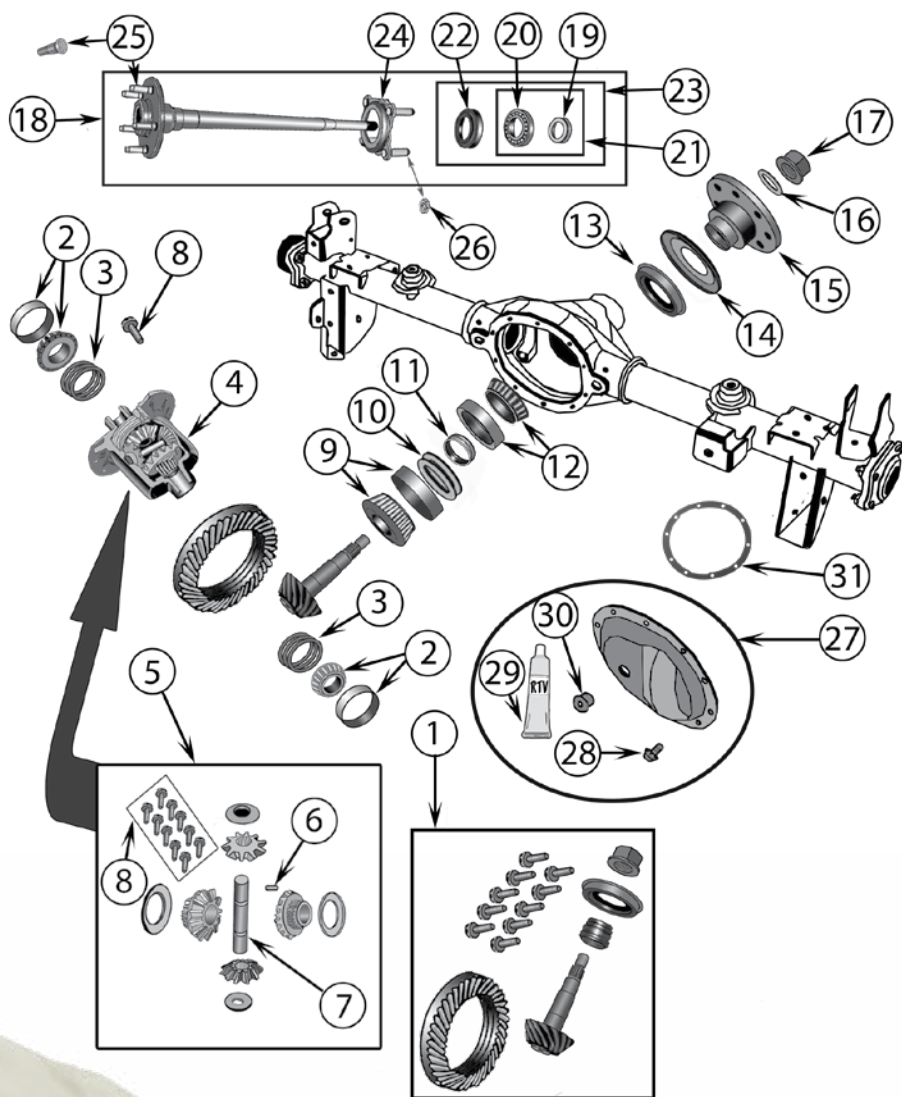
Item #	Description	Years	Comments	Replaces Part #
11	Baffle, Pinion	07/18		68004076AA
12	Shim Kit, Pinion	07/18	.035" - .039"	4856368
		07/18	.040" - .044"	4856369
		07/18	.045" - .049"	4856370
		07/18	.050" - .054"	4856371
13	Spacer, Crush	07/18		5066047AA
14	Bearing Set, Pinion	07/18	Outer	J8126499
15	Seal, Pinion	07/18		68004072AA
16	Slinger, Pinion	07/18		68004073AA
17	Flange, Pinion	07/18	24 Splines	68004070AB
18	Bolt, Pinion Flange	07/18	M12 x 1.75 x 32.5mm	5191037AD
19	Nut, Pinion Yoke	07/18		J3182601
20	Knuckle, Steering	07/18	Right, LHD Only	68004086AA
		07/18	Left, LHD Only	68004087AA
21	Ball Joint Kit	07/18	Includes 1 Upper & 1 Lower w/ Hardware	68004085AA
22	Nut, Axle Shaft	07/18		68048466AA
23	Axle Shaft Assembly	07/12	Right	68004080AA
		07/12	Left	68004081AA
		13/18	Right	68145054AA
		13/18	Left	68145055AA
24	U-Joint, Axle Shaft	07/12	Left or Right	J8126638
		07/12	Left or Right; Spicer®	8126638SP
		13/18	Left or Right	68017182AA
25	Shaft, Outer	07/12	Left or Right	68004079AA
26	Seal, Axle Shaft	07/12	Left or Right; 1-Piece Design	5014852AB
		13/18	Left or Right; 2-Piece Design	68304271AA
27	Guide, Axle Shaft	07/18		68004090AA
28	Slinger, Inner Axle Shaft	07/18	Plastic	5083669AA
29	Differential Cover	07/18	Includes Bolts & Fill Plug	4713451
30	Gasket, Differential Cover	07/18	Paper	J8120360
31	Sealant, RTV	07/18		J8993317
32	Plug, Differential Cover	2007		5137582AA
		08/11		J4004751
		12/18		5137582AA
33	Bolt, Differential Cover	07/18	10 Required	J0273573



Item #	Description	Years	Comments	Replaces Part #
1A	Ring & Pinion Set	07/18	3.73 Ratio	68088918AA
		07/18	4.10 Ratio	68017175AB
1B	Ring & Pinion Only	07/18	4.88 Ratio	D44JK488F
		07/18	4.56 Ratio	D44JK456F
		07/18	5.13 Ratio	D44JK513F
		07/18	5.38 Ratio	D44JK538F
2	Bearing Set, Carrier	07/18	Includes 2 Bearings & 2 Cups	68003555AA
3	Shim Set, Carrier	07/18		68003556AA
4	Case Assembly, Differential	07/18	4.10 Ratio	68017176AA
5	Bolt Kit, Ring Gear	07/18	Includes (10) 7/16" Bolts	68003554AA
6	Axle Locker Actuator	07/18	w/ Rubicon Package	68312884AA
7	Additive, Limited Slip	07/18		4318060AB
8	Bearing Set, Pinion	07/18	Inner; Includes Bearing & Cup	4746979
9	Spacer, Crush	07/18		5066047AA

Dana 44 Front Axle | JK 2007 - 2018

Item #	Description	Years	Comments	Replaces Part #
10	Shim Kit, Pinion	07/18	.035" - .039"	4856368
		07/18	.040" - .044"	4856369
		07/18	.045" - .049"	4856370
		07/18	.050" - .054"	4856371
11	Baffle, Pinion	07/18		68004076AA
12	Bearing Set, Pinion	07/18	Outer	J8126499
13	Slinger, Pinion	07/18		68004073AA
14	Seal, Pinion	07/18		68004072AA
15	Flange, Pinion	07/18		68004070AB
16	Nut, Pinion	07/18		J3182601
17	Bolt, Pinion Flange	07/18	M12 x 1.75 x 32.5mm	5191037AD
18	Sensor, Axle Locker	07/18		68003569AA
19	Ball Joint Kit	07/18	Includes 1 Upper & 1 Lower w/ Hardware	68004085AA
20	Knuckle, Steering	07/18	Right, LHD Only	68004086AA
		07/18	Left, LHD Only	68004087AA
21	Axle Shaft Assembly	07/18	Left	68017180AB
		07/18	Right	68017183AB
22	U-Joint, Axle Shaft	07/18	Left or Right	68017182AA
23	Shaft, Stub	07/18	Left or Right	68017181AB
24	Nut, Axle Shaft	07/18		68048466AA
25	Guide, Axle Shaft	07/08		68017185AA
		09/18		68048472AA
26	Seal, Axle Shaft	07/12	Left or Right; 1-Piece Design	5014852AB
		13/18	Left or Right; 2-Piece Design	68304271AA
27	Differential Cover	07/18	Includes Bolts & Fill Plug	5083661AA
28	Gasket, Differential Cover	07/18	Paper	J8122409
29	Sealant, RTV	07/18		J8993317
30	Bolt, Differential Cover	07/18	5/16"-18 x 1/2"	J0273573
31	Plug, Differential Cover	2007	LHD	5137582AA
		2007	RHD	J4004751
		2008		J4004751
		09/18		5137582AA



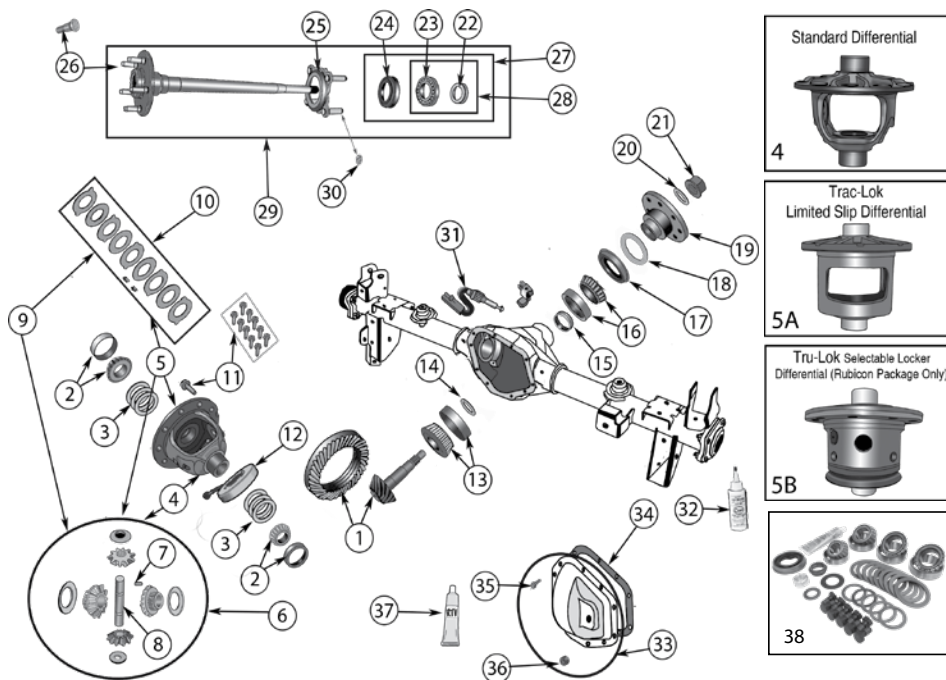
Item #	Description	Year	Comments	Ratio	Includes	Replaces Part #
1	Ring & Pinion Set	2007		3.21		68003525AA *
		2007		4.10		68003538AA *
2	Bearing Set, Differential	2007	Includes 2 Bearings & 2 Cups	All		J8126500
3	Shim Set, Carrier	2007		All		83503004
4	Case Assembly, Differential	2007		All		5012808AB

*This Part # not currently carried by Crown Automotive

Dana 35 Rear Axle | JK 2007

5	Gear Set, Differential	2007		All		68003527AA
6	Pin, Differential Shaft	2007		All		J0636360
7	Shaft, Differential	2007		All		68003531AA *
8	Bolt Kit, Ring Gear	2007	Includes 10; 7/16"-20 Bolts	All		5012810AC
9	Bearing Set, Pinion	2007	Inner; Includes Bearing & Cup	All		4746979
10	Shim Set, Pinion	2007	.035" - .039"	All		4856368
		2007	.040" - .044"	All		4856369
		2007	.045" - .049"	All		4856370
		2007	.050" - .054"	All		4856371
11	Spacer, Crush	2007		All		5183525AA
12	Bearing Set, Pinion	2007	Outer; Includes Bearing & Cup	All		4864210
13	Seal, Pinion	2007		All		68003265AA
14	Slinger, Pinion	2007		All		4746867
15	Flange, Pinion	2007	24 Splines	All		68003262AA
16	Washer, Yoke	2007		All		1795175
17	Nut, Pinion	2007		All		5191197AA
18	Axle Shaft Assembly	2007	Left	All	19, 20, 22, 24	68003533AA
		2007	Right	All	19, 20, 22, 24	68003534AA
19	Retaining Ring, Axle Shaft	2007	2.25" OD	All		83503077
20	Bearing, Axle Shaft	2007		All		83503064
21	Bearing & Retainer Kit, Axle Shaft	2007		All	19, 20	994262K
22	Seal, Axle Shaft	2007	Left or Right	All		68003270AA
23	Axle Shaft Bearing Kit	2007	Left or Right	All	19, 20, 22	D44JKBK
24	Retainer, Axle Shaft	2007	Left or Right	All		68008523AA
25	Stud, Wheel	2007	1/2"-20 Threads	All		6036424AA
26	Nut, Axle Shaft Retainer	2007	4 Required per side; M12 x 1.5	All		68003275AA
27	Differential Cover	2007		All		68003532AA *
28	Bolt, Differential Cover	2007	10 Required	All		J0273573
29	Sealant, RTV	2007		All		J8993317
30	Plug, Differential Cover	2007	Metal	All		5137582AA
31	Gasket, Differential Cover	2007	Paper	All		35AXCG

* This Part # not currently carried by Crown Automotive



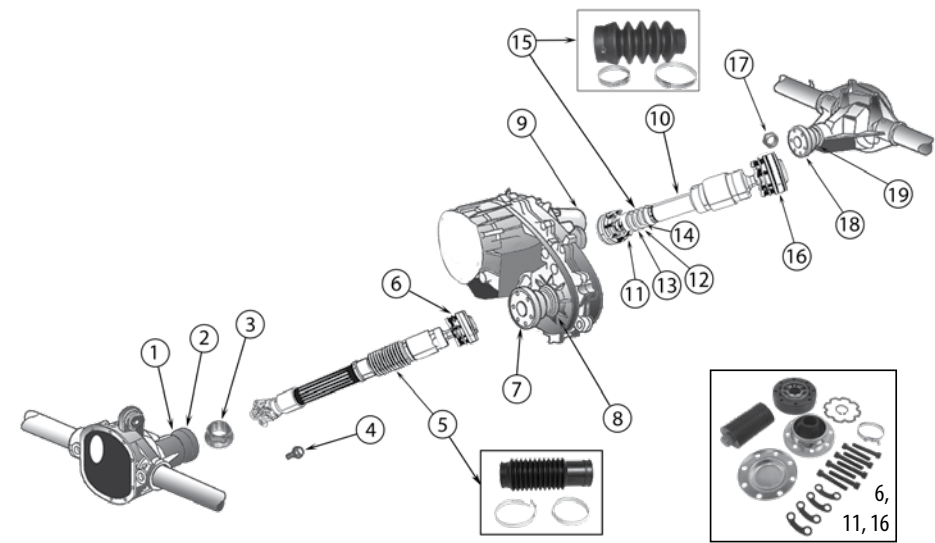
Item #	Description	Years	Comments	Ratio	Includes	Replaces Part #
1	Ring & Pinion Set	2007	Uses 7/16" Ring Gear Bolts	3.21	1, 11, 14, 19, 20	68003263AA *
		07/18	Uses 1/2" Ring Gear Bolts	3.21	1, 11, 14, 19, 20	68035568AA
		08/18	Uses 1/2" Ring Gear Bolts	3.73	1, 11, 14, 19, 20	68038761AA
		07/18	Uses 1/2" Ring Gear Bolts	4.10	1	D44JK410R
		2007	Uses 7/16" Ring Gear Bolts	4.11	1, 11, 14, 19, 20	68003426AA
		07/18	Uses 1/2" Ring Gear Bolts	4.11	1, 11, 14, 19, 20	68035581AA
		07/18	Uses 1/2" Ring Gear Bolts	4.56	1	D44JK456R
		07/18	Uses 1/2" Ring Gear Bolts	4.88	1	D44JK488R
		07/18	Uses 1/2" Ring Gear Bolts	5.13	1	D44JK513R
		07/18	Uses 1/2" Ring Gear Bolts	5.38	1	D44JK538R
2	Bearing Set, Differential	07/18	w/ Standard or Trac-Lok Diff.; Incl. 2 Bearings & 2 Cups	All		J8124071
		07/18	w/ Tru-Lok Diff.; Includes 2 Bearings & 2 Cups	All		68003555AA
3	Shim Set, Carrier	07/18	w/ Standard or Trac-Lok Diff.	All		68003268AA
		07/18	w/ Tru-Lok Diff.	All		68003556AA
4	Case Assembly, Differential	2007	w/ Standard Diff. w/ 7/16" Ring Gear Bolts	All		68003266AA *
		07/18	w/ Standard Diff. w/ 1/2" Ring Gear Bolts	All	2, 11	68035574AA
5A	Case Assembly, Differential	2007	w/ Trac-Lok Diff. w/ 7/16" Ring Gear Bolts	All		68003544AA *
		07/18	w/ Trac-Lok Diff. w/ 1/2" Ring Gear Bolts	All	2, 11	68035642AA
5B	Case Assembly, Differential	2007	w/ Tru-Lok Diff. w/ 7/16" Ring Gear Bolts	All		68003553AA *
		07/18	w/ Tru-Lok Diff. w/ 1/2" Ring Gear Bolts	All	2, 11, 30	68036128AA
6	Gear Set, Differential	2007	Standard Diff. w/ 7/16" Ring Gear Bolts	All		68003267AA *
		07/18	Standard Diff. w/ 1/2" Ring Gear Bolts	All	11	68035575AA

* This Part # not currently carried by Crown Automotive

Dana 44 Rear Axle | JK 2007 - 2018

Item #	Description	Years	Comments	Ratio	Includes	Replaces Part #
7	Pin, Differential Shaft	07/18	w/ Standard or Trac-Lok Diff.	All		J0636360
8	Shaft, Differential	07/18	w/ Standard or Trac-Lok Diff.	All		68019471AA
9	Gear Set, Differential	2007	w/ Trac-Lok Diff. w/ 7/16" Ring Gear Bolts	All		68003545AA *
		07/18	w/ Trac-Lok Diff. w/ 1/2" Ring Gear Bolts	All		68035643AA *
10	Disc Kit, Differential	07/18	w/ Trac-Lok Diff.	All		68003546AA
11	Bolt Kit, Ring Gear	2007	w/ Standard or Trac-Lok Diff. w/ 7/16" Ring Gear Bolts	All		5012810AC
		2007	w/ Tru-Lok Diff. w/ 7/16" Ring Gear Bolts	All		68003554AA
		07/18	All w/ 1/2" Ring Gear Bolts	All		68035573AA
12	Axle Locker Actuator	07/18	w/ Tru-Lok Differential	All		68312884AA
13	Bearing Set, Pinion	07/18	Inner; Includes Bearing & Cup	All		4746979
14	Shim Set, Pinion	07/18	.035" - .039"	All		4856368
		07/18	.040" - .044"	All		4856369
		07/18	.045" - .049"	All		4856370
		07/18	.050" - .054"	All		4856371
15	Spacer, Crush	07/18		All		5183525AA
16	Bearing Set, Pinion	07/18	Outer; Includes Bearing & Cup	All		4864210
17	Seal, Pinion	07/18		All		68003265AA
18	Slinger, Pinion	07/18		All		4746867
19	Flange, Pinion	07/18	24 Splines	All		68003262AA
20	Washer, Pinion	07/18		All		1795175
21	Nut, Pinion	07/18		All		5191197AA
22	Retaining Ring, Axle Shaft	07/18	2.25" OD	All		83503077
23	Bearing, Axle Shaft	07/18		All		83503064
24	Seal, Axle Shaft	07/18		All		68003270AA
25	Retainer, Axle Shaft	07/18		All		68008523AA
26	Stud, Wheel	07/18	1/2"-20 Threads	All		6036424AA
27	Axle Shaft Bearing Kit	07/18		All	22, 23, 24	D44JKBK
28	Bearing & Retainer Kit, Axle Shaft	07/18		All	22, 23	994262K
29	Axle Shaft Assembly	07/18	Left or Right; w/ Standard or Trac-Lok Diff.; 30 Splines	All	22, 23, 24, 25, 26	68003272AA
		07/18	Left; w/ Tru-Lok Differential; 32 Splines	All	22, 23, 24, 25, 26	68003557AA
		07/18	Right; w/ Tru-Lok Differential; 32 Splines	All	22, 23, 24, 25, 26	68003558AA
30	Nut, Axle Shaft Retainer	07/18	4 Required per side	All		68003275AA
31	Sensor, Axle Locker	07/18	w/ Tru-Lok Diff.	All		68003569AA
32	Additive, Limited Slip	07/18		All		4318060AB
33	Differential Cover	07/18		All	34, 35	5014821AA
34	Gasket, Differential Cover	07/18	Paper	All		J8122409
35	Bolt, Differential Cover	07/18	10 Required	All		J0273573
36	Plug, Differential Cover	07/09		All		5137582AA
		10/11		All		68048835AA *
		12/18		All		5137582AA
37	Sealant, RTV	07/18		All		J8993317
38	Bearing & Seal Master Kit	07/18	w/o Tru-Lok Differential	All		D44JKMASKIT

* This Part # not currently carried by Crown Automotive



Item #	Description	Location	Years	Comments	Replaces Part #
1	Seal, Pinion	Front	07/18	w/ Dana 30 or Dana 44	68004072AA
2	Flange, Pinion	Front	07/18	w/ Dana 30 or Dana 44	68004070AB
3	Nut, Pinion	Front	07/18	w/ Dana 30 or Dana 44	J3182601
4	Bolt, Drive Shaft	Front	07/18	To Axle; w/ or w/o Rubicon Package; M12 x 1.75 x 32.5mm	5191037AD
5	Drive Shaft Boot Kit	Front	07/18	Includes Boot and 2 Clamps	68229211AA
6	CV Joint Repair Kit	Front	07/18	Transfer Case End	528533FRK
7	Flange, Transfer Case	Front	07/18 07/18	w/ or w/o Rubicon Package w/ Double Cardan Drive Shaft Conversion; Designed for use with a U-Joint (3.219" Width)	68001935AA * 68271086AA

* This Part # not currently carried by Crown Automotive

Item #	Description	Location	Years	Comments	Replaces Part #
8	Seal, Transfer Case Output	Front	07/18	w/ or w/o Rubicon Package	4798125
9	Seal, Transfer Case Output	Rear	07/18	w/ or w/o Rubicon Package	5013019AA
10	Drive Shaft	Rear	07/11	w/ 2 Doors w/ 3.8L Engine w/ 42RLE Transmission w/o Rubicon Package	68022107AC
		Rear	07/11	w/ 4 Doors w/ 3.8L Engine w/ 42RLE Transmission w/o Rubicon Package	68022102AD *
11	CV Joint Repair Kit	Rear	07/18	Transfer Case End	528533FRK
12	Boot, Drive Shaft	Rear	07/18	w/ 2 Doors	5083001AA
13	Clamp, Drive Shaft	Rear	07/18	w/ 2 Doors; Large; (54.5mm)	5013625AA
14	Clamp, Drive Shaft	Rear	07/18	w/ 2 Doors; Small; (39.6mm)	5013626AA
15	Boot Kit, Drive Shaft	Rear	07/18 09/18	w/ 2 Doors; Includes Boots, Clamps & Grease w/ 4 Doors: Includes Boots, Clamps & Grease	5012793AA 68400289AA
16	CV Joint Repair Kit	Rear	07/18	Axle End	528533FRK
17	Nut, Pinion	Rear	07/18	w/ Dana 35 or Dana 44	5191197AA
18	Flange, Pinion	Rear	07/18	w/ Dana 35 or Dana 44; 24 Splines	68003262AA
19	Seal, Pinion	Rear	07/18	w/ Dana 35 or Dana 44	68003265AA

* This part is not currently carried by Crown Automotive



Item #	Description	Year	Engine	Spline Count	Spline Diameter	Disc Size	Notes	Replaces Part #
1	Clutch Disc	07/11	3.8L	10	1.125"	10.375"		52104733AB
2	Clutch Kit	07/11 12/18	3.8L 3.6L	10	1.125"	10.375"		52104732AB 5106124AD
3	Clutch Release Bearing	07/18	All					53008342
4	Clutch Master Cylinder	07/18	All					52060132AC
5	Clutch Slave Cylinder	07/18	All					52060133AD
6	Clutch Hose	07/11	All				LHD	52060477AE
7	Pilot Bearing	07/18	3.8L, 3.6L					53009181
8	Clutch Fork	07/18	All					53006388
9	Clutch Fork Pivot	07/18	All					52087542
10	Clutch Fork Spring	07/18	All					4338855
11	Clutch Pedal Bushing	07/18	All					52010309AB
12	Clutch Pedal Pad	07/18	All	2.5" Wide				52002750
13	Clutch Alignment Tool	07/11	3.8L	10	1.125"	3/4" Pilot Bearing Diameter		53011

JK 2007 - 2018



Item #	Description	Years	Engine	Comments	Dimensions	Type	Replaces Part #
--------	-------------	-------	--------	----------	------------	------	-----------------

Radiators, Coolant Bottles & Related

1	Radiator	07/11	3.8L		22" x 20-15/16"	1 Row	55056633AB
		12/18	3.6L		22" x 20-15/16"	1 Row	68143886AA
		14/18	3.0L Gas		22" x 20-15/16"	1 Row	68143886AA
2	Radiator Cap	07/10	3.8L	18 psi			52079799AA
		12/18	3.6L				4596198
		14/18	3.0L Gas				4596198
3	Radiator Isolator	07/18	All	L or R, Lower			52079884AA
		07/18	All	L or R, Upper			52079419
4	Radiator Draincock	07/18	All				4644269
5	Coolant Bottle	07/11	3.8L				55056542AE
		12/18	3.6L				68091500AD
		14/18	3.0L Gas				68091500AD
		07/10	2.8L Dsl	Cap Not Included			55056622AE
6	Coolant Bottle Cap	07/11	3.8L Gas				55056382AA
		12/18	3.6L	16 psi			4596198
		14/18	3.0L Gas	16 psi			4596198
		07/18	2.8L Dsl.	16 psi			4596198

Water Pumps & Related

7	Water Pump	07/11	3.8L	Includes Gasket			4666044AA
		12/18	3.6L	Gasket Not Included			68079412AB
		14/18	3.0L Gas	Gasket Not Included			68079412AB
		07/18	2.8L Dsl.	Includes Seal			68027359AA
8	Water Pump Gasket	07/11	3.8L				4666068AC
		12/18	3.6L				68087340AA
		14/18	3.0L Gas				68087340AA
9	Coolant Crossover Gasket	12/18	3.6L				68083133AB
		14/18	3.0L Gas				68083133AB

Continued on next page

10



11



12



13



14



15



16



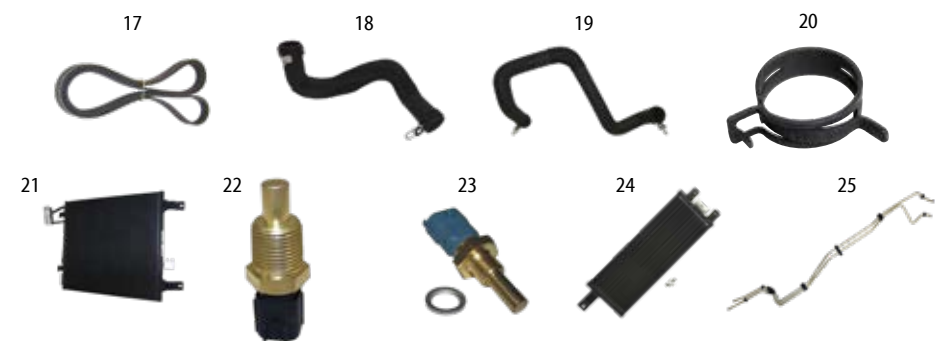
Item #	Description	Years	Engine	Comments	Dimensions	Type	Replaces Part #
Thermostats & Related							
10	Thermostat	07/11	3.8L	195°; Seal Not Included			4573560AB
11	Thermostat & Housing	07/11	3.8L	195°; Includes Seal			4666149AA
		12/18	3.6L	203°; Includes Seal			5184651AF
		14/18	3.0L Gas	203°; Includes Seal			5184651AF
12	Thermostat Seal	12/18	3.6L				5184894AA
		14/18	3.0L Gas				5184894AA

Pulleys, Tensioners & Related

13	Drive Belt Idler Pulley	07/11	3.8L	w/ A/C		Smooth	4891720AA
		07/11	3.8L	w/o A/C		6 Grooves	53034002AA
		12/18	3.6L			6 Grooves	53034002AA
		12/18	3.6L			Smooth	4627039AA
		14/18	3.0L Gas			Smooth	4627039AA
		14/18	3.0L Gas			6 Grooves	53034002AA
		07/18	2.8L Dsl.	Left Idler (Steel)		Smooth	68027602AA
		07/18	2.8L Dsl.	Top Idler		Smooth	68027603AA
14	Drive Belt Tensioner	07/11	3.8L				53032860AA
		12/18	3.6L				4627038AA
		14/18	3.0L Gas				4627038AA
		07/18	2.8L Dsl.				68027611AB

Cooling Fan Modules & Related

15	Cooling Fan Module	07/11	3.8L	w/ Harness			55056642AD
		07/18	2.8L Dsl.	w/ Harness			55056642AD
		12/18	3.6L				68143894AB
		14/18	3.0L Gas				68143894AB
16	Fan Clutch	07/09	3.8L				55056699AA



Item #	Description	Years	Engine	Comments	Dimensions	Type	Replaces Part #
--------	-------------	-------	--------	----------	------------	------	-----------------

Accessory Drive Belts

17	Accessory Drive Belt	07/11	3.8L	w/o A/C	82.5" Long	6 Ribs	4593684AA
		07/11	3.8L	w/ A/C	90.0" Long	6 Ribs	53032857AB
		12/18	3.6L		87.6" Long	6 Ribs	4627043AA
		14/18	3.0L Gas		87.6" Long	6 Ribs	4627043AA
		07/18	2.8L Dsl.	w/ A/C	96.5" Long	6 Ribs	53034095AA

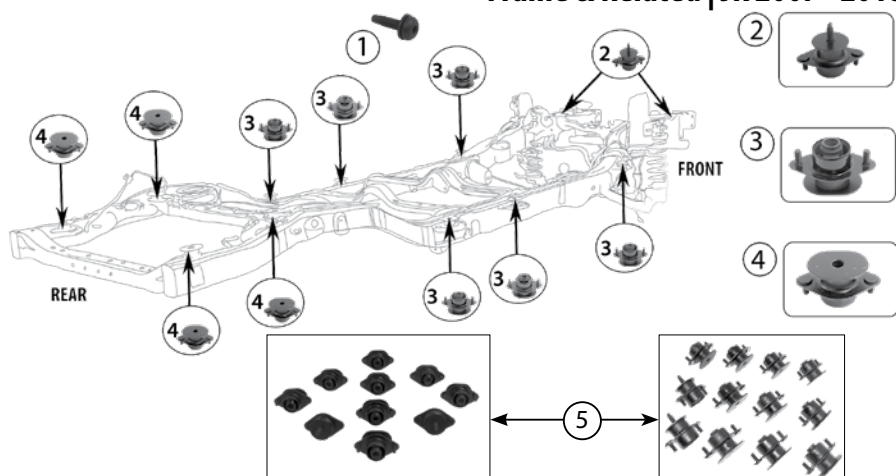
Radiator Hoses

18	Upper Radiator Hose	07/11	3.8L	LHD or RHD			55057204AB
		12/18	3.6L	Includes Clamps & Braided Protective Loom			55111394AC
		14/18	3.0L Gas	Includes Clamps & Braided Protective Loom			55111394AC
		07/10	2.8L Dsl.	Includes Engine Side Clamp			55057201AC
		11/18	2.8L Dsl.	Includes Engine Side Clamp			55111211AA
19	Lower Radiator Hose	07/11	3.8L	LHD			55057203AB
		12/14	3.6L	Includes Clamps; LHD or RHD			55111395AC
		15/18	3.6L	Includes Clamps; RHD			55111395AC
		2014	3.0L Gas	Includes Clamps; LHD or RHD			55111395AC
		15/18	3.0L Gas	Includes Clamps; RHD			55111395AC
20	Radiator Hose Clamp	12/18	3.6L	Upper or Lower			4809147AA
		14/18	3.0L Gas	Upper or Lower			4809147AA
		17/19	2.8L Dsl.	Lower			4809147AA

Miscellaneous

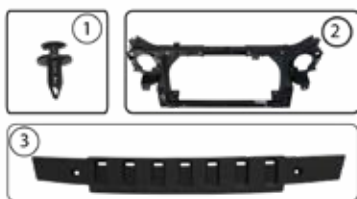
21	A/C Condenser & Transmission Cooler	07/11	3.8L	w/ Automatic Transmission			55056635AA
		07/18	2.8L Dsl.	w/ Automatic Transmission			55056635AA
22	Coolant Temperature Sensor	2007	3.8L				5269870AB
		08/11	3.8L				5149077AB
		12/13	3.6L				5149077AB
		14/18	3.6L				68164627AA
		14/18	3.0L Gas				68164627AA
23	Coolant Temperature Sensor	07/18	2.8L Dsl.				5066779AA
24	Transmission Cooler	12/18	3.6L	w/ Automatic Transmission			68143895AA
		14/18	3.0L Gas	w/ Automatic Transmission			68143895AA
25	Transmission Cooler Hose Set	07/11	3.8L	w/ 42RLE Transmission			55056624AD
		12/18	3.6L	w/ W5A580			55111450AE
		14/18	3.0L Gas	w/ W5A580			55111450AE

Frame & Related | JK 2007 - 2018



Item #	Description	Position	Color	Years	2 or 4 Door	Comments	Replaces Part #
1	Hard Top Screw	L or R	Black	07/18	2 or 4-Door	w/ Factory Hard Top; M8 -1.25 x 29mm	6506826AA
2	Body Mount	L or R	Black	07/18	2 or 4-Door	w/ 4WD; Front Mount	52126186AA
3	Body Mount	L or R	Black	07/18	2 or 4-Door	A-Pillar Mount	55366677AB
		L or R	Black	07/18	2-Door	B-Pillar Mount	55366677AB
		L or R	Black	07/10	4-Door	w/ 2WD; B-Pillar Mount	55366680AC
		L or R	Black	07/18	4-Door	w/ 4WD; B-Pillar Mount	55366677AB
		L or R	Black	07/18	4-Door	C-Pillar Mount	55366677AB
4	Body Mount	L or R	Black	07/18	2 or 4-Door	Above Rear Axle & Closest to Rear Bumper	55366676AC
5	Body Mount Kit	L & R	Black	07/18	2-Door	Hardware Not Included; Incl. 10 Mounts	55366676K2
		L & R	Black	07/18	4-Door	Hardware Not Included; Incl. 12 Mounts	55366676K4

Grille & Related



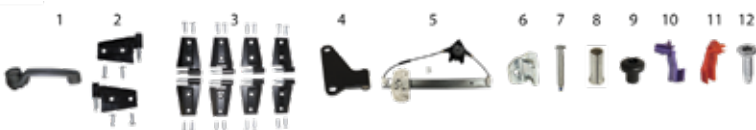
Item #	Description	Position	Color	Years	Comments	Replaces Part #
1	Push Pin	Front	Black	07/18	Grille Retainer; 6 Required	6503598
2	Header Panel	Front	Black	07/18		55077976AD
3	Bumper Cover to Grille	Front	Black	07/18	Located between Grille & Front Bumper	1BE94RXFAC

JK 2007 - 2018 | Windshield & Related



Item #	Description	Years	Color	Comments	Replaces Part #
1	Windshield Frame	07/18	Black Primed		68028605AJ
2	Windshield Reinforcement Set	07/18	Black Primed	Left & Right	55395578K
	Windshield Reinforcement	07/18	Black Primed	Right	55395578AB
		07/18	Black Primed	Left	55395579AB
3	Windshield Spacer	07/18		L or R; Spaces Windshield Properly During Installation	55397209AA

Door & Related



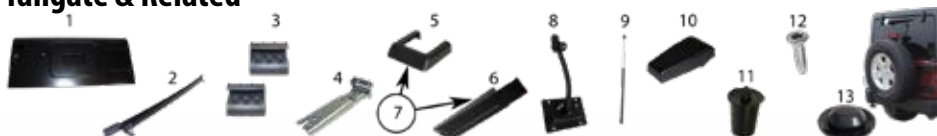
Item #	Description	Years	Position	Color	Quantity Included	Comments	Replaces Part #
1	Door or Tailgate Handle	07/18	F or R, L or R	Black Textured	1		4589164AF
2	Door Hinge	07/18	F or R, Left	Black Primed	1	Upper or Lower; Door Side	55395385AC
		07/18	F or R, Right	Black Primed	1	Upper or Lower; Door Side	55395384AC
3	Door Hinge Set	07/18	F or R, L & R	Black Primed	2	Upper or Lower; Door Side	55395384K
		07/18	F & R, L & R	Black Primed	4	Upper or Lower; Door Side; Includes Hardware	55395384K4
		07/18	F & R, L & R	Black Primed	8	Upper & Lower; Door Side; Includes Hardware	55395384K8
4	Door Hinge	07/18	F or R, Right	Black Primed	1	Lower; Body Side	55395392AE
		07/18	F or R, Left	Black Primed	1	Lower; Body Side	55395393AE
5	Window Regulator	07/18	Front, Left		1	2 or 4-Door	68014949AA
		07/18	Front, Right		1	2 or 4-Door	68014948AA
		07/18	Rear, Left		1	4-Door	68014951AA
		07/18	Rear, Right		1	4-Door	68014950AA
6	Door Striker	07/18	F or R, L or R		1	Also Swing Gate Striker	4589050AB
7	Door Hinge Pin	07/18	F or R, L or R		1	Upper & Lower; Door Side; 2 Required Per Door	55395702AE
8	Door Hinge Pin Bushing	07/18	F or R, L or R		1	Upper & Lower; Body Side; 2 required Per Door	55395703AD
9	Door Hinge Nut	07/07	F or R, L or R	Black	1	M6 x 1	6511744AA
10	Door Lock Rod Clip	07/18	F or R, L or R	Purple	1		4658444
11	Door Lock Rod Clip	07/18	F or R, L or R	Orange	1		4658445
12	Door Hinge Screw	07/18	F or R, L or R		1	4 Needed Per Door	6509101AA

Hood & Related | JK 2007 - 2018



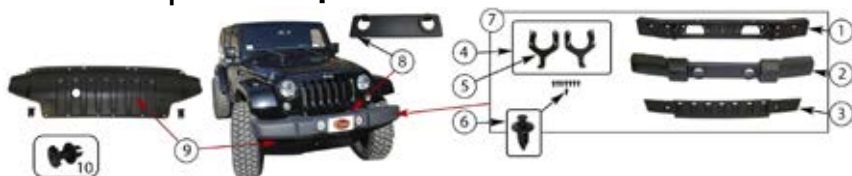
Item #	Description	Years	Position	Color	Comments	Replaces Part #
1	Hood	07/18		Black Primed	Standard Hood	68002350AB
2	Hood Lock	07/18			Uses Factory Ignition Key	82213051AB
3	Hood Catch	07/18	L or R	Black	2 Required	55395653AD
4	Hood Catch Bracket	07/18	L or R	Black	2 Required	55176428AC
5	Hood Catch Kit	07/18	L or R	Black	Includes 1 Catch & 1 Bracket	55395653K
6	Hood Catch Kit	07/18	L & R	Black	Includes 2 Catches & 2 Brackets	55395653K2
7	Hood Hinge	07/18	L or R	Black Primed	2 Required	55395396AE
8	Hood Safety Catch	07/18		Black		55395654AA
9	Footman's Loop	07/18		Black		55176422
10	Footman's Loop Kit	07/18		Black	Includes Footmans Loop & 2 Nuts	55176422K
11	Footmans Loop Nut	07/18			2 Required; M4 x .7 threads w/ Captured Washer	6502028
12	Hood Hinge Screw	07/18	L or R			6509101AA
13	Retainer	07/18			Hood Insulation Mounting; M6.3 X 15 Push Pin	6504135
14	Hood Bumper	07/18	L or R		We suggest replacing both bumpers on 2007 models due to OE bumper style change	55395650AD
15	Hood Bumper	07/18	L or R		Hood to Fender (2 Required)	55276578AA

Tailgate & Related



Item #	Description	Year	Position	Color	Comments	Replaces Part #
1	Tailgate	07/18		Black Primed		68079246AA
2	Tailgate Bar	07/18		Black		55395757AE
3	Tailgate Bar Retainer	07/18	Right	Black		68041620AA
		07/18	Left	Black		68041621AA
4	Tailgate Hinge	07/18	Upper or Lower	Black		55395401AE
5	Tailgate Hinge Cover	07/18	Lower	Black	Body Side	55397089AB
		07/18	Upper	Black	Body Side	55397090AB
6	Tailgate Hinge Cover	07/18	Lower	Black	Door Side	55397091AC
		07/18	Upper	Black	Door Side	55397092AC
7	Tailgate Hinge Cover Set	07/18	Upper & Lower	Black Textured	Includes L & R (4 Covers)	55397091K
8	Tailgate Check Assembly	12/18				4589890AC
9	Liftgate Glass Support	07/10	L or R			4589609AA
		11/18	L or R			68068261AA
10	Liftglass Hinge Cover	11/18	L or R	Black		68140033AA
11	Spare Tire Bumper	07/18	L or R		2 Required	55395993AB
12	Tailgate Hinge Screw	07/18				6509101AA
13	Tailgate Body Plug	07/18		Black, Oval	19mm x 25mm	4440294

JK 2007 - 2018 | Front Bumper & Related



Item #	Description	Color	Years	Comments	Replaces Part #
1	Bumper Beam	Black	07/18	Non-Export	68003322AA
2	Fascia	Black Textured	07/18	Non-Export; w/ Fog Lamp Holes w/ Tow Hook Hole	1FN67RXFAA
		Black Textured	09/18	USA; w/o Fog Lamp Holes; w/o Tow Hook Hole	1FN66RXFAA
3	Bumper Cover	Black	07/18	Located between Grille & Front Bumper	1BE94RXFAC
4	Tow Hook Set	Black Textured	07/18	Left and Right; Includes 2 Tow Hooks	52060378K
5	Tow Hook	Black Textured	07/18	Left or Right	52060378AC
6	Push Pin	Black	07/11	Front Bumper Cover	6502625
		Black	12/18	Front Bumper cover; w/ Plastic Bumper	6502625
7	Bumper Kit	Black Textured	07/18	Includes Items # 1, 2, 3, 4, 6	1FN67K
8	Fascia Applique	Black Primed	07/18	w/ Plastic Bumper, w/ Fog Lamps	1ML27TZZAA
9	Air Dam	Black Textured	07/18	w/ Plastic Bumper	1BE95XXXAD
10	Air Dam Retainer	Black	12/18	6 Required	6510734AA

Rear Bumper & Related



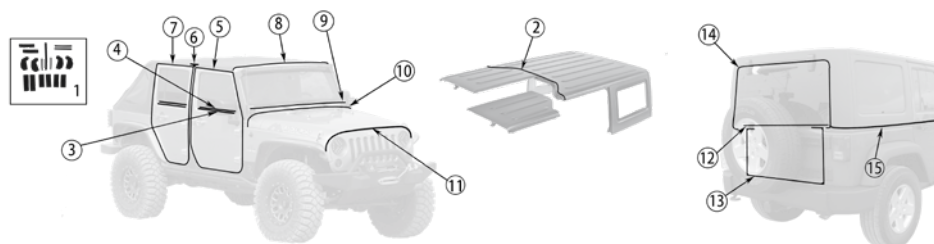
Item #	Description	Color	Years	Comments	Replaces Part #
1	Bumper	Black Textured	07/18		1BD22RXFAD
	Bumper Kit	Black Textured	07/18	Includes Bumper and (2) Outer Bumper Brackets (#3 Below)	1BD22RXFADK
2	Bumper Bracket	Black	07/18	Inner, Left or Right	55078100AA
3	Bumper Bracket	Black	07/18	Outer, Left; w/ Plastic Bumper	55397117AB
			07/18	Outer, Right; w/ Plastic Bumper	55397116AB
			13/18	Left w/ Steel Bumper	68195813AA
			13/18	Right w/ Steel Bumper	68195812AA
4	Bumper Bracket	Black	13/18	Right; w/ Steel Bumper	68195812AA
			13/18	Left; w/ Steel Bumper	68195813AA
5	License Plate Bracket	Black Textured	07/18	w/ Light	68064720AA
6	License Plate Delete Plate	Textured Black	07/18		55397112AA
7	License Plate Mounting Nut		07/18	M4.2 x 1.41; Snap-In	6509432AA
8	Trailer Hitch	Gloss Black	07/18	2" Receiver; 350 lb. Torque Weight; 3500 lb. Towing Capacity	52060290AE
9	Trailer Hitch Kit	Gloss Black	07/18	2" Receiver; Includes Grade 8 Bolts and Washers; 350 lb. Tongue Weight; 3500 lb. Towing Capacity	52060290K
10	Trailer Hitch Master Kit	Gloss Black	07/18	Includes Hitch, Hardware, 4-Pin Harness & Hitch Pin	52060290MK

Fender & Related | JK 2007 - 2018



Item #	Description	Years	Position	Color	Comments	Replaces Part #
1	Fender	07/18	Left	Black Primed		68002399AD
		07/18	Right	Black Primed		68002398AD
2	Fender Flare	07/18	Front, Left	Black Textured		5KF09RXFAG
		07/18	Front, Left	Smooth Paintable		5KC87TZZAG
		07/18	Front, Right	Black Textured		5KF08RXFAG
		07/18	Front, Right	Smooth Paintable		5KC86TZZAG
3	Fender Flare	07/18	Rear, Left	Black Textured		5KF17RXFAE
		07/18	Rear, Left	Smooth Paintable		5KC85TZZAE
		07/18	Rear, Right	Black Textured		5KF16RXFAE
		07/18	Rear, Right	Smooth Paintable		5KC84TZZAE
4	Fender Flare Set	07/18	Front, L & R	Black Textured	Includes 2 Flares & Hardware	5KFKFR
5	Fender Flare Set	07/18	Rear, L & R	Black Textured	Includes 2 Flares & Hardware	5KFKRR
6	Fender Flare Kit	07/18	F & R, L & R	Black Textured	Includes 4 Flares & Hardware	5KFK
		07/18	F & R, L & R	Smooth Paintable	Includes 4 Flares & Hardware	5KCK
7	Fender Flare Hardware Kit	07/18	All		Includes Clips, Rivets, Retainers & U-Nuts For 4 Flares	5KHK
8	Fender Flare Brace	07/18	Front, Left	Black	Fits Under Fender Flare	55078135AF
		07/18	Front, Right	Black	Fits Under Fender Flare	55078134AF
9	Fender Liner	07/18	Front, Left			55157117AH
		07/18	Front, Right			55157116AH
10	Fender Liner	07/18	Rear, Left			55157127AH
		07/18	Rear, Right			55157126AH
11	Rivet	07/18	F or R, L or R		Flare Mounting; M6.3 X 25 Rivet	6506007AA
12	Retainer	07/18	F or R, L or R		Flare Mounting; M6.3 X 23	J4007117
13	Clip Nut	07/18	F or R, L or R		Flare Mounting; M6 X 1	6504118
14	Retainer	07/18	F or R, L or R		Flare Mounting	55157055AA
15	Retainer	07/18	Front, L or R		Flare Mounting; 1 Required Per Flare	68033045AA
16	Fender Flare Nut	07/18	All			6506955AA

JK 2007 - 2018 | Weatherstrip & Seals



Item #	Description	Position	Years	Doors	Comments	Replaces Part #
1	Hard Top Seal Kit		07/18	2 or 4-Door	w/ Hard Top	68026937AB
2	Hard Top Seal		11/18	4-Door	Freedom Panels to Hard Top	68088040AA
3	Door Glass Weatherstrip	Front, Left	07/18	2 or 4-Door	w/ Full Steel Doors; Outer	55395269AD
	Door Glass Weatherstrip	Front, Right	07/18	2 or 4-Door	w/ Full Steel Doors; Outer	55395268AD
	Door Glass Weatherstrip Kit	Front, L & R	07/18	2 or 4-Door	w/ Full Steel Doors; Outer	55395268K
4	Door Glass Weatherstrip	Front, L or R	07/18	2 or 4-Door	w/ Full Steel Doors; Inner	55395715AB *
5	Door Weatherstrip	Front, Left	07/18	2 or 4-Door	w/ Full Steel Doors	55395275AU
		Front, Right	07/18	2 or 4-Door	w/ Full Steel Doors	55395274AU
6	B-Pillar Seal	Left	07/18	4-Door		55395709AE
		Right	07/18	4-Door		55395708AE
7	Door Weatherstrip	Rear, Left	07/18	4-Door	w/ Full Steel Doors	55395719AO *
		Rear, Right	07/18	4-Door	w/ Full Steel Doors	55395718AU *
8	Windshield Frame Weatherstrip		07/18	2 or 4-Door	Windshield Frame to Header Channel	55397454AL
9	Windshield Frame Weatherstrip		07/18	2 or 4-Door	Windshield Frame to Cowl	55395241AE
10	Hood Weatherstrip		07/18	2 or 4-Door	Hood to Cowl	55395243AB
11	Hood Weatherstrip		07/18	2 or 4-Door	Hood To Grille	55397279AB
12	Liftglass Seal	Lower	07/10	2 or 4-Door	w/ Hard Top; Glass to Tailgate	55397042AE
		Lower	11/18	2 or 4-Door	w/ Hard Top; Glass to Tailgate	68139994AB
13	Tailgate Weatherstrip	Sides & Lower	07/18	2 or 4-Door		55395661AF
14	Liftglass Weatherstrip	Sides & Upper	07/10	2 or 4-Door	w/ Hard Top; Glass to Hard Top	55395244AF
		Sides & Upper	11/18	2 or 4-Door	w/ Hard Top; Glass to Hard Top	68088043AA
15	Hard Top Seal	Left	07/18	4-Door		68005015AC
		Right	07/18	4-Door		68005014AC
		Left	07/18	2-Door		68005017AC
		Right	07/18	2-Door		68005016AC

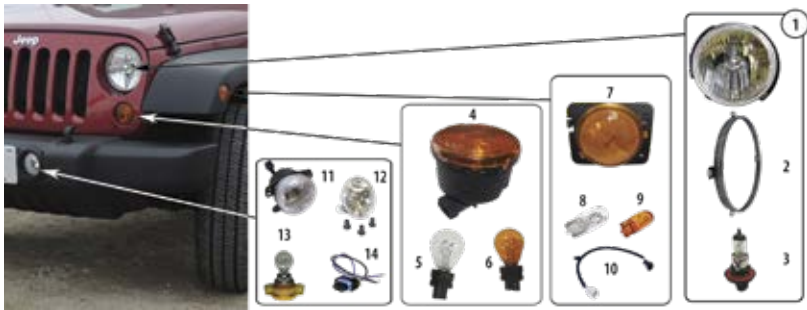


Item #	Description	Position	Color	Years	Comments	Replaces Part #
1	Door Handle	F or R, Right	Black	07/08	Inside	55395406AC
		F or R, Left	Black	07/08	Inside	55395407AC
		F or R, L & R	Black	07/08	Inside, Includes Left and Right	55395406K
2	Window Handle	F or R, L or R	Black	07/12	w/ Full Steel Doors	FW80PX9
3	Footman Loop	F or R, L or R	Black	07/18	Attaches to Interior Door	55397012AA
4	Seatbelt Mount Cover	Front, L or R	Black	11/18		5HF07DX9AE
5	Door Lock Switch Bezel	Left	Black	11/18		68185911AA
		Right	Black	11/18		68185910AA
6	Pedal Pad	Clutch or Brake	Black	07/18	w/ Manual Transmission; 2-1/2" Wide	52002750
7	Pedal Pad	Brake	Black	07/18	w/ Automatic Transmission	68031956AA
8	Floor Pan Plug	F or R, L or R	Black	07/13	10 Required for 2-Door; 12 Required for 4-Door	55397226AA
		F or R, L or R	Black	14/18	10 Required for 2-Door; 12 Required for 4-Door	68194821AA
9	Retainer		Black	08/18	Used for Interior Moldings, Etc.; M6.3 X 30 Push Pin	6501916
10	Retainer	F or R, L or R		12/14	Door Panel Mounting	6509673AA
		Front, L or R		17/18	w/ Half Doors; Door Panel Mounting	6509673AA
		Rear, L or R		17/18	w/ Full Steel Doors; Door Panel Mounting	6509673AA
11	Retainer		Black	07/18	A-Pillar Molding Mounting; M6.3 X 22.8 Push Pin	6502871
12	Door Handle Nut	F or R, L or R		07/18	Plastic, Clip-In	6501773

JK 2007 - 2018 | Top (Hard / Soft) Miscellaneous



Item #	Description	Color	Years	Comments	Replaces Part #
1	Door Surround Knob	Black	07/18	2 or 4-Door; w/ Soft Top; 4 Required	55397130AC
2	Door Surround Knob	Black	07/18	4-Door; w/ Soft Top; 2 Required; To Soundbar	55397132AB
3	Soft Top Latch Bumper	Black	07/18	L or R	68036552AA
4	Hard Top Bumper	Black	07/18	L or R, Hard Top to B-Pillar Hoop Bumper	68005011AB
5	Hard Top Mounting Knob	Black	07/18	L or R	1CJ57DX9AD
6	Quarter Panel Glass Spacer	Black	07/18	L or R; Foam	55028214
7	Hard Top Seal Kit		07/18	Includes Various Seals to Repair Leaks	68026937AB
8	Soft Top Bow Lock	Black	07/18	2-Door, L or R	68032496AA
9	Hard Top Nut		07/18	L or R; 6 Required	55397093AC
10	Hard Top Screw		07/18	L or R; 8 Required; M8-1.25 x 29mm	6506826AA
11	Hardtop Hardware Kit		07/18	L & R; Includes 6 Nuts (#9) and 6 Screws (#10)	55397093K
			07/18	L & R; Includes 6 Nuts (#9) and 8 Screws (#10)	55397093K8
12	Soft Top Bow Bracket	Black	13/18	w/ 4 Doors; Right; Mounts to Roll Bar Behind Seat	68163704AB
		Black	13/18	w/ 4 Doors; Left; Mounts to Roll Bar Behind Seat	68163705AB
	Soft Top Bow Bracket Set	Black	13/18	w/ 4 Doors; L&R; Mounts to Roll Bar Behind Seat	68163704K
13	Soft Top Bow Knuckle	Black	07/18	w/ Sunrider Soft Top; L or R	5166017AB
14	Screw	Black	07/18	Soft Top Bow Mounting Bracket Screw; M6 x 1 x 20	6503259



Item #	Description	Position	Years	Comments	Replaces Part #
Front					
1	Headlight Assembly	Left	07/18	USA & Canada Only; Includes Seat, Headlight, Bulb & Retainer	55078149AC
		Right	07/18	USA & Canada Only; Includes Seat, Headlight, Bulb & Retainer	55078148AC
2	Headlight Retainer	Left or Right	07/18	Polished Stainless Steel	68003772AA
		Left or Right	07/18	Black	68003772BLK
3	Headlight Bulb	Left or Right	07/18	H13	L0000H13
4	Parking Light	Left	07/13	Amber Lens w/ Clear Bulb	55077885AD
		Right	07/13	Amber Lens w/ Clear Bulb	55077884AD
5	Bulb, Clear	Left or Right	07/18	Non-Export; Front Turn Signal, Rear Turn Signal, Front Parking Light, Rear Parking Light, Brake Light, Reverse Light; 3157 Bulb	L0003157
		Left or Right	07/18	Long Life Version of L0003157 Bulb	L003157KLC
6	Bulb, Amber	Front, L or R	14/18	Parking Light w/ Clear Lens; 3157NA Bulb	L03157NA
		Front, L or R	14/18	Long Life Version of L03157NA Bulb	L0003157AK
7	Side Repeater Light	Left	07/18	Amber Lens w/ Clear Bulb	55078145AA
		Right	07/18	Amber Lens w/ Clear Bulb	55078144AA
		Left	07/18	Export Only	55077895AD
		Right	07/18	Export Only	55077894AD
8	Bulb, Clear	Varies	07/18	License Plate & Front Side Marker; 194 Bulb	L0000194
		Left or Right	07/18	Export; Side Repeater Bulb; 168 Bulb	L0000168
9	Bulb, Amber	Left or Right	07/18	Side Marker Light w/ Clear Light Kit; 194NA Bulb	L00194NA
10	Front Sidemarker Wiring Harness	Left or Right	07/18		56055463AB
11	Fog Light	Left or Right	07/09		4805856AA
		Left or Right	10/12		5182026AA
		Left or Right	13/18	w/ OEM Plastic Bumper	5182026AA
12	Fog Light	Left or Right	13/18	w/ OEM Steel Bumper	68081399AB
13	Fog Light Bulb	Left or Right	10/18	PSX24W Bulb	L000PSX24W
14	Wiring Harness Repair Kit	Left or Right	10/18	Front Fog Lights	5017113AA



Item #	Description	Position	Years	Comments	Replaces Part #
Rear					
15	Tail Light	Left	07/18	Includes Light, Bulbs, & Wire Harness	55077891AC
		Right	07/18	Includes Light, Bulbs, & Wire Harness	55077890AC
		Left	07/18	Export; Includes Light, Bulbs, & Wire Harness	55078147AC
		Right	07/18	Export; Includes Light, Bulbs, & Wire Harness	55078146AC
16	Tail Light Wiring	Left or Right	07/11	Europe	68004167AA
17	Tail Light Wiring	Left or Right	07/18		68004166AA
18	Brake Light Assembly & Bracket	High Mount	07/18	Includes Spare Tire Bracket & High Stop Lamp	55397217AJ
19	Bulb		07/18	Engine Compartment Bulb; 561 Bulb	54003086
20	License Plate Light		07/18	Does Not Include Bulb or Socket	68064721AA
21	Rear Fog Lamp Bulb	Left or Right	07/18	Export Only	L002825W5W
22	Under Hood Light		2007		68395126AA



Item #	Description	Position	Years	Color/Finish	Comments	Replaces Part #
1	Side Mirror	Left	07/18	Textured Black	LHD; Manual	55077967AC
		Left	07/10	Textured Black	LHD; Export; Manual w/ Convex Glass	55078131AE
		Left	07/10	Textured Black	RHD; Manual w/ Convex Glass	55077969AD
2	Side Mirror	Right	07/18	Textured Black	LHD; Manual	55077966AC
3	Side Mirror	Left	11/13	Textured Black	Power, Heated	5182175AA
		Left	11/13	Textured Black	Export; Power, Heated w/ Convex Glass	5182183AA
		Left	2014	Textured Black	LHD; Power, Heated	68229611AA
		Left	2014	Textured Black	Export (Middle East Markets); Power, Heated	68229611AA
		Left	15/18	Textured Black	Power, Heated	68249847AC
		Left	15/18	Textured Black	RHD; Power, Heated	68249852AD
4	Side Mirror	Right	11/13	Textured Black	Power, Heated	5182174AA
		Right	2014	Textured Black	LHD; Power, Heated	68229612AA
		Right	15/18	Textured Black	Power, Heated	68249846AC
		Right	15/18	Textured Black	RHD; Power, Heated	68249849AD
5	Side Mirror	Left	15/18	Chrome	Power, Heated, Manual	68249844AC
		Right	15/18	Chrome	Power, Heated, Manual	68249845AC
6	Rearview Mirror	Center	07/18		w/o Auto Dim Mirror	55156172AA



Item #	Description	Years	Engine	Comments	Replaces Part #
Starting & Charging Components					
1	Alternator	07/11	3.8L	w/ 160 Amp Alternator	4801304AC
		12/18	3.6L	w/ 160 Amp Alternator	68078950AA
		14/18	3.0L Gas	w/ 160 Amp Alternator	68078950AA
2	Starter	07/08	3.8L		4801269AB
		09/11	3.8L	w/ Manual Transmission	4801269AB
		09/11	3.8L	w/ Automatic Transmission	4748046AB
		12/18	3.6L		56029852AA
		14/18	3.0L Gas		56029852AA
		07/10	2.8L Dsl.		4801268AB
3	Starter Bolt	12/18	2.8L Dsl	Upper or Lower	6505549AA
Engine Components					
4	Air Temperature Sensor	2007	3.8L		4606487AB
		08/11	3.8L		5149176AB*
		12/18	3.6L		5149182AB
		14/18	3.0L Gas		5149182AB
		07/10	2.8L Dsl.		68031593AA
5	Camshaft Position Sensor	2007	3.8L		4686353
		08/11	3.8L		5149078AD
		12/18	3.6L		5149141AF
		14/18	3.0L Gas		5149141AF
		07/18	2.8L Dsl.		5140332AA
6	Coolant Temperature Sensor	2007	3.8L		5269870AB
		08/11	3.8L		5149077AB
		12/13	3.6L		5149077AB
		14/18	3.6L		68164627AA
		14/18	3.0L Gas		68164627AA
		07/18	2.8L Dsl.		5066779AA
7	Crankshaft Position Sensor	2007	3.8L		5029811AC
		08/11	3.8L	w/ Manual Transmission	4727451AA
		08/11	3.8L	w/ Automatic Transmission	5029811AC
		12/18	3.6L		5149167AD
		14/18	3.0L Gas		5149167AD
8	Engine Oil Temperature Sensor	12/18	3.6L		5149077AB
		14/18	3.0L Gas		5149077AB
9	Fuel Vapor Sensor	12/15	3.6L		4593949AB

Continued on next page

* This Part # not currently carried by Crown Automotive



Item #	Description	Years	Engine	Comments			Replaces Part #
10	Harness Repair Kit	2007	3.8L	Air Intake Temp. Sensor			5014003AA
		07/11	3.8L	Fuel Injector			5183448AA
		07/10	3.8L	MAP Sensor			5161924AA
		07/18	All	A/C Clutch, Evap. Solenoid, F or R Locker Sensor, Oil Pressure Switch			5017117AA
		12/18	All	Ignition Coil			5017117AA
11	Ignition Coil	07/11	3.8L				56032520AC
		12/18	3.6L	6 Per Engine			5149168AI
12	Ignition Switch	07/18	All				4685719AG
13	Ignition Wire Set	07/11	3.8L				68017712AB
14	Knock Sensor	07/11	3.8L				5033316AA
		2012	3.6L				5149188AA*
		13/18	3.6L				68166540AA
15	MAP Sensor	07/11	2.8L Dsl.				5101120AB
		07/11	3.8L	Twist In Style			5033310AC
		07/11	3.8L	Incl. Sensor, Wiring Connector & Harness			5033310ACK
		12/18	3.6L				5149174AB
		14/18	3.0L Gas				5149174AB
16	Oil Pressure Sensor	07/18	2.8L Dsl.				5149064AA
		07/11	3.8L				4608303
		12/18	3.6L				5149062AA
		14/18	3.0L Gas				5149062AA
17	Oxygen Sensor	07/09	3.8L	w/ LHD	Before Cat.	Left	56029085AA
		07/09	3.8L	w/ RHD	Before Cat.	Left	56029084AA
		10/11	3.8L		Before Cat.	Left	56029049AA
		07/09	3.8L		Before Cat.	Right	56029084AA
		10/11	3.8L		Before Cat.	Right	5149170AA
		07/09	3.8L		After Cat.	Left	56029049AA
		10/11	3.8L		After Cat.	Left	5149170AA
		07/11	3.8L		After Cat.	Right	56029049AA
		2012	3.6L	w/ LHD	Before Cat.	Right	5149171AA
		2012	3.6L	w/ RHD	Before Cat.	Right	5149180AA
		12/18	3.6L		Before Cat.	Left	5149180AA
		13/18	3.6L		Before Cat.	Right	5149171AA
		12/18	3.6L		After Cat.	Left	5149171AA
		12/18	3.6L		After Cat.	Right	5149180AA
		14/18	3.0L Gas		Before Cat.	Left	5149180AA
		14/18	3.0L Gas		Before Cat.	Right	5149171AA
		14/18	3.0L Gas		After Cat.	Left	5149171AA
		14/18	3.0L Gas		After Cat.	Right	5149180AA

JK 2007 - 2018



Item #	Description	Years	Engine	Comments	Replaces Part #
18	Spark Plug	07/11 12/18 14/18	3.8L 3.6L 3.0L Gas	Double Platinum Iridium Iridium	S2RE14PLP5 SP149125AD SP149125AD

Drivetrain Components

19	Axle Locker Sensor	07/18	All	w/ Rubicon Package, F or R	68003569AA
20	Axle Locker Sensor Connector	07/18	All	w/ Rubicon Package, F or R	68003570AA
21	Neutral Safety Switch	07/11 07/18	All All	w/ 42RLE Transmission w/ NSG370 Transmission	4659677AC 68089074AA
22	Pressure Transducer Sensor	07/11	All	w/ 42RLE Transmission	5078336AA
23	Transfer Case Switch	07/18	All	w/ NV241 or NV241OR	5083138AA
24	Transmission Input Speed Sensor	07/11	All	w/ 42RLE, 545RFE Transmission	4799061AB
25	Transmission Output Speed Sensor	07/11	All	w/ 42RLE Transmission	52854001AA
26	Transmission Speed Sensor Module	11/18	All	w/ W5A580 Transmission	52108308AC
27	Transmission Pressure Sensor Transducer	07/10	All	w/ 545RFE	4799758AD
28	Transmission Shift Solenoid	11/18	All	w/ W5A580 Transmission	5189057AB
29	Transmission Torque Converter Solenoid	11/18	All	w/ W5A580 Transmission	52108314AB
30	Trans. Shift Pressure Solenoid	11/18	All	w/ W5A580 Transmission	5138838AA
31	Wheel Speed Sensor	07/18 07/18	All All	Front, Left or Right Rear, Left or Right	68003281AC 52125003AB
32	Harness Repair Kit	07/18	All	Rear Wheel Speed Sensor	5183448AA

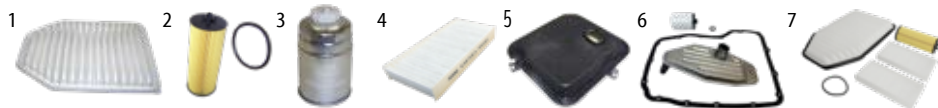
Body Components

33	Ambient Temperature Sensor	07/18	All		5149265AB
34	Brake Light Switch	07/18	All		56042023
35	Clockspring	07/12 13/18	All All		5156106AD 5156106AD
36	Door Jamb Switch	2007	All	Left or Right	4687558



Item #	Description	Years	Engine	Comments	Replaces Part #
34	TPMS Sensor	07/11	All	Non-Export	56029479AB
		07/11	All	Export	56029481AB
		2012	All		56029481AB
		13/18	All		56029398AB
35	Multifunction Switch	07/10	All	w/o Fog Lamps	5183952AF
		07/18	All	w/o Automatic Headlamps, w/ Fog Lamps	68041485AD
		11/18	All	w/ Automatic Headlamps, w/o Rear Fog Lamps	68015101AG
36	Speed (Cruise) Control Switch	07/10	All		4671929AC

FILTERS



Item #	Description	Years	Engine / Transmission	Comments	Replaces Part #
1	Air Filter	07/18	2.8L Dsl.		53034019AD
		14/18	3.0L Gas		53034018AE
		12/18	3.6L		53034018AE
		07/11	3.8L		53034018AE
2	Oil Filter	07/18	2.8L Dsl.		68032204AB
		14/18	3.0L Gas		68191349AA
		12/13	3.6L	Includes Filter & O-Ring	68079744AB
		14/18	3.6L		68191349AA
		07/11	3.8L		4105409
3	Fuel Filter	07/18	2.8L Dsl.		52126244AA
4	Cabin Air Filter	11/13		2 Required	55111302AA
		14/18			68233626AA
5	Transmission Filter	07/10	545RFE	w/ 4WD	4799507AA
		07/10	545RFE	Spin-On Type	4799662
		07/11	42RLE		52852913AB
		11/18	W5A580	5-Speed Automatic Transmission	52108325AA
6	Transmission Filter Kit	07/10	545RFE	w/ 4WD; Includes # 5, Cooler Filter, & Gasket	5179267AC
		07/10	42RLE	Includes #5, & Gasket	52852913K
7	Master Filter Kit	07/18	2.8L Dsl.	Includes #s 1, 2, 3	MFK1
		12/13	3.6L	Includes #s 1, 2, 4	MFK23
		14/18	3.6L	Includes #s 1, 2, 4	MFK24
		07/11	3.8L	Includes #s 1, 2	MFK22

JK 2007 - 2018



Item #	Description	Years	Engine	Comments	Replaces Part #
--------	-------------	-------	--------	----------	-----------------

Fuel Delivery

1	Fuel Injector	07/11	3.8L		4861667AA
		12/18	3.6L		5184085AC
2	Fuel Injector O-Ring	07/18	2.8L Dsl.	Upper	68032207AA
3	Fuel Injector O-Ring Kit	07/11	3.8L	1 Required	5103377AA
		14/18	3.0L Gas	6 Required	68080831AA
		12/18	3.6L	6 Required	68080831AA
4	Fuel Injector Seal	08/18	2.8L Dsl.	Lower; Copper	5072722AA
5	Fuel Injector Clip	07/11	3.8L		4418257AB
6	Fuel Module	07/10	3.8L	Until 3-30-2011	68003339AD
		2011	3.8L	After 3-30-2011; Includes O-Ring	68065575AA
		14/18	3.0L Gas	Includes O-Ring	68065575AA
		12/18	3.6L	Includes O-Ring	68065575AA
7	Fuel Module O-Ring	07/18	All		55366298AA

Fuel Tank & Related

8	Fuel Filler Cap	07/18	All Gas	Locking w/ Coded Cylinder, USA	5015636AA
		07/18	All Gas	Non-Locking	52102464AA
		07/18	All Gas	Non-Locking w/ Tether	52030387AB
		07/18	All Gas	Locking w/ Uncoded Cylinder	68030940AA
		08/11	All	Non-Locking, Export	52102464AA
9	Fuel Filler Hose Assembly	07/18	All Gas	Includes Filler Tube, Fuel Vent Tube, & Vapor Canister Vent Tube w/ Filter	52059821AS

Throttle Body & Related

10	Throttle Body	2007	3.8L		4861661AB
		08/11	3.8L		4593858AB
		12/18	3.6L		5184349AC
		14/18	3.0L Gas		5184349AC
11	Throttle Body Gasket	07/10	3.8L	w/ Flush Lip on Intake Manifold Plenum	4666113AA
		08/11	3.8L	w/ Recessed Lip on Intake Manifold Plenum	4593899AA
		14/18	3.0L Gas		53032763AA
		12/18	3.6L		53032763AA
12	Accelerator Pedal Assembly	07/18	All		53032868AD



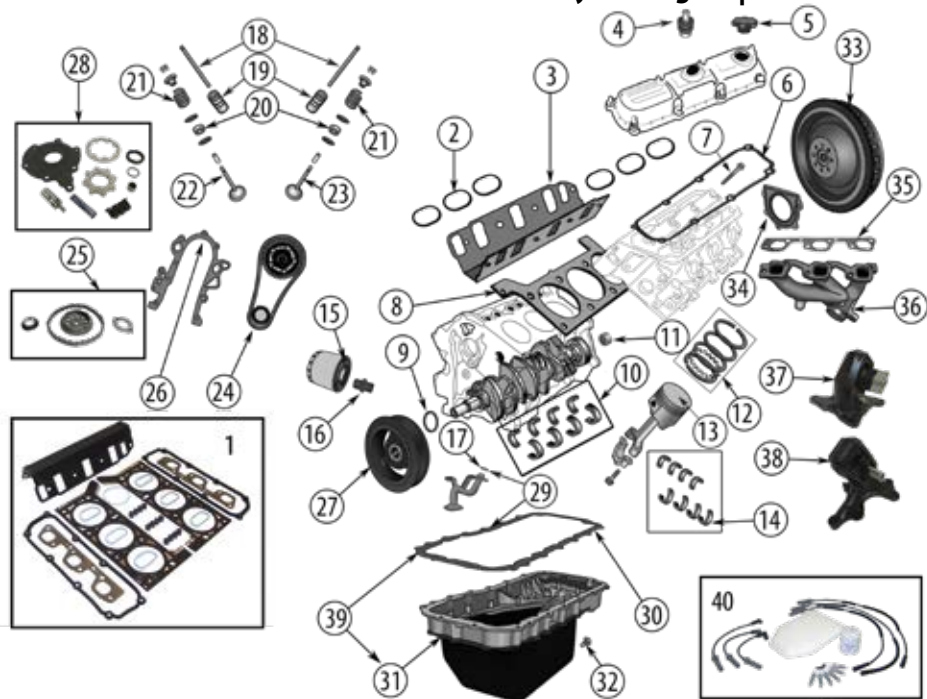
Item #	Description	Years	Engine	Comments	Replaces Part #
1	A/C Condenser	07/11	3.8L	w/ Manual Transmission	55056726AA
		07/18	2.8L Dsl.	w/ Manual Transmission	55056726AA
2	A/C Condenser and Transmission Cooler	07/11	3.8L	w/ Automatic Transmission	55056635AA
		07/18	2.8L Dsl.	w/ Automatic Transmission	55056635AA
		12/13	3.6L		68143891AA
		14/18	3.0L Gas		68143891AA
3	Evaporator Core	07/11	All		68004194AC
		12/18	3.6L, 2.8L Dsl.	LHD or RHD	68154897AB
4	Receiver Drier	07/18	All		68003495AA
5	Blower Motor	07/10	All	LHD	68004195AA
6	Blower Motor Resistor	07/10	All		68004196AA
7	Blend Door Actuator	07/10	All		68000470AA
		11/18	All		68018109AA
8	Cabin Air Filter	11/13	All	2 Required	55111302AA
		14/18	All		68233626AA
9	Mode Cable	07/10	All	w/ Clip	68004203AB
10	Temperature Control Cable	07/10	All	w/ Clip	68004204AB
11	Ambient Temperature Sensor	07/18	All		5149265AB
12	A/C Pressure Transducer Valve	12/18	All		68141376AB

JK 2007 - 2018| 2.8 Liter Diesel Engine



Item #	Description	Years	Comments	Replaces Part #
1	Engine Oil Drain Plug	07/18		68040680AA
2	Oil Filler Cap	07/18		4863741
3	Oil Filter	07/18		68032204AB
4	Camshaft Plug	07/18		5179593AA
5	Camshaft Thrust Washer Set	07/18		68142790AA
6	Timing Belt	07/18		68029524AA
7	Timing Belt Kit	07/18	Includes Timing Belt & Tensioner	68031478AA
8	Engine Mount	07/10	Left or Right	52060196AD
9	Cylinder Head Bolt	07/18	10 Required: Torque-to-Yield	68142831AA
10	Starter Bolt	07/18	Upper or Lower	6505549AA
11	Rocker Arm	07/18	Intake or Exhaust	68027600AA
12	Master Filter Kit	07/18	Includes Air, Fuel, & Oil Filters	MFK1

3.8 Liter Chrysler Engine | JK 2007 - 2011



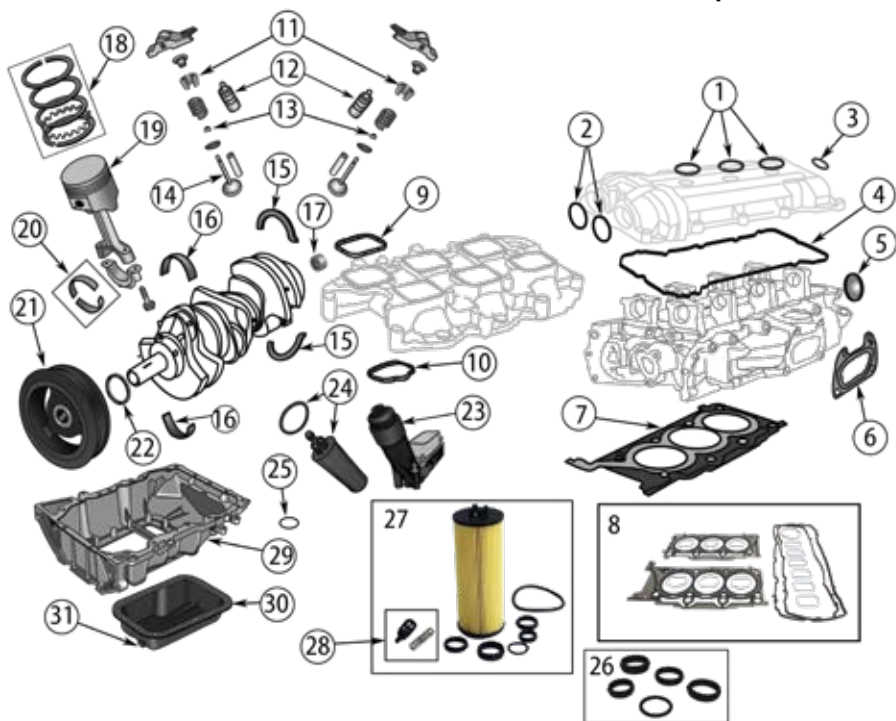
Item #	Description	Years	Comments	Replaces Part #
1	Engine Gasket Set	07/11	Upper; After 7/1/2007	68003427AC
2	Intake Manifold Seal	07/11	Lower Intake Manifold to Upper Plenum; 6 Required	4781580AA
3	Intake Manifold Gasket	07/11	Intake Manifold To Cylinder Head Gasket	4781034AB
4	PCV Valve	07/11		4648973AD
5	Oil Filler Cap	07/11		53013775AB
6	Valve Cover Gasket	07/11	Left or Right	4648987AA
7	Cylinder Head Bolt	07/11	16 Required	6504060
8	Cylinder Head Gasket	07/11	Left; After 7/1/2007	4666033AB
		07/11	Right; After 7/1/2007	4666034AB
9	Crankshaft Seal	07/11	Front	4792317AB
10	Crankshaft Main Bearing Set	07/11	Includes 3 Crankshaft Bearings & 1 Thrust Bearing	5175980K
11	Pilot Bearing	07/11	1" OD	53009181
12	Piston Ring Set	07/11	Standard Size; For 6 Pistons	68001386AA
13	Piston and Pin	07/11	Standard Size; 6 Required; No Rod Included	4666129P
14	Connecting Rod Bearing Set	07/11	For 6 Connecting Rods	5161294K
15	Oil Filter	07/11		4105409

JK 2007 - 2011 | 3.8 Liter Chrysler Engine

Item #	Description	Years	Comments	Replaces Part #
16	Oil Filter Connector	07/11		53007563AB
17	Oil Pickup Tube O-Ring	07/11	16 Required	6032920
18	Push Rod	07/11	Intake or Exhaust	4781024AA
19	Lifter	07/08	w/ .904" Diameter Lifter	4621938AB
		07/08	w/ .842" Diameter Lifter	4892465AA
		09/11	w/ .842" Diameter Lifter	4892465AA
20	Valve Seal	07/11	Intake or Exhaust	4781072AB
21	Valve Spring	07/11	Intake or Exhaust	4781588AC
22	Intake Valve	07/11	Standard Size	4781025AA
23	Exhaust Valve	07/11	Standard Size	4781029AB
24	Timing Chain	07/11		4666059AA
25	Timing Chain Kit	07/11	Includes Chain, Camshaft Sprocket, Thrust Plate, & Crankshaft Gear	68001402AA
26	Timing Cover Gasket	07/11		4621987AC
27	Harmonic Balancer	07/11		4666099AB
28	Oil Pump Repair Kit	07/11	Includes Rotor Set, Cover, Plunger, Spring, Cap, Seals, & Bolts	5143977K
29	Gasket Set, Oil Pan	07/11	Includes #17 & #30	5241062AB
30	Engine Oil Pan Gasket	07/11	Upper	4448896AB
31	Engine Oil Pan	07/11	Includes Upper & Lower Oil Pan	4666153AC
32	Engine Oil Drain Plug	07/11	M14 x 1.5 Threads	6506214AA
33	Flywheel	07/11		4666102AA
34	Crankshaft Retainer & Seal Kit	07/11	Rear	68031388AA
35	Exhaust Manifold Gasket	07/11	Left or Right	4892409AA
36	Exhaust Manifold	07/11	Left	4666024AD
		07/11	Right	4666026AB
37	Engine Mount	07/11	Left	52059943AE
38	Engine Mount	07/11	Right	52059940AD
39	Engine Oil Pan Kit	07/11	Incl. Upper & Lower Oil Pan & Oil Pan to Engine Block Gasket	4666153K
40	Tune-Up Kit	07/11	Includes Air Filter, Oil Filter, Spark Plugs & Wire Set	TK45

3.6 Liter Pentastar® Engine | JK 2012 - 2018

3.0 Liter Pentastar® Engine (Export) | JK 2014 - 2018



Item #	Description	Years	Engine	Comments	Replaces Part #
1	Spark Plug Well Gasket	12/18	All	Left or Right	5184778AB
2	Camshaft Seal	12/18	All	Left or Right; Intake or Exhaust	5184855AB
3	Camshaft Sensor Seal	12/18	All	Left or Right	5184772AB
4	Valve Cover Gasket	12/18	All	Left	5184595AE
		12/18	All	Right	5184596AE
5	Freeze Plug	12/18	All	Left or Right; At Cylinder Heads; 1.25"	4556020AB
6	Exhaust Manifold Gasket	12/18	All	Left or Right	68093232AA
7	Cylinder Head Gasket	12/18	3.6L	Left	5184455AG
		12/18	3.6L	Right	5184456AG
8	Upper Engine Gasket Set	12/18	3.6L		68078540AC
9	Intake Manifold Seal	12/18	All	Upper Manifold to Lower Manifold; 6 Required	5184562AC
10	Intake Manifold Seal	12/18	All	Lower Manifold to Cylinder Head; 6 Required	5184331AC

JK 2012 - 2018 | 3.6 Liter Pentastar® Engine**JK 2014 - 2018 | 3.0 Liter Pentastar® Engine (Export)**

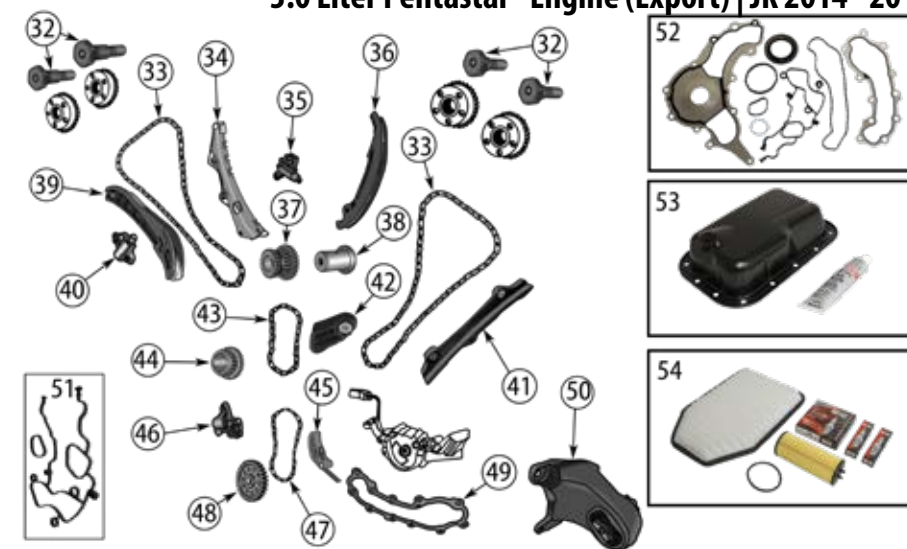
Item #	Description	Years	Engine	Comments	Replaces Part #
11	Valve Spring Lock	12/18	All	Intake or Exhaust; 2 Required Per Valve	466372Z
12	Lifter	12/18	All	Intake or Exhaust	5184332AA
13	Valve Seal	12/18	All	Intake or Exhaust	5184168AB
14	Intake Valve	12/18	All	Standard	5184127AC
15	Crankshaft Thrust Bearing Set	12/18	All	Standard	5184129K
16	Crankshaft Main Bearing Set	12/18	3.6	Standard; Includes 4 Bearings	5184105K
17	Crankshaft Pilot Bearing	12/18	3.6L		53009181
18	Piston Ring Set	14/18	3.0L	Standard; For 6 Pistons	68214841AA *
		12/18	3.6L	Standard; For 6 Pistons	68078776AA
19	Piston & Pin	12/18	3.6	Standard; 6 Required; No Rod Included	5184347P
20	Connecting Rod Bearing Set	12/18	3.0L	Standard; For 1 Connecting Rod	68088069AA *
		12/18	3.0L	-.003mm; For 1 Connecting Rod	68088070AA *
		12/18	3.0L	+.003mm; For 1 Connecting Rod	68088068AA *
		12/18	3.6L	Standard; Set of 6	5184112AK
		12/18	3.6L	-.003mm; For 1 Connecting Rod	5184113AF *
		12/18	3.6L	+.003mm; For 1 Connecting Rod	5184111AF *
21	Harmonic Balancer	12/18	All		5184293AH
22	Crankshaft Seal	12/18	All	Front	68079589AA
23	Engine Oil Filter & Cooler Assembly	12/13	3.6L	Includes Oil Pressure and Oil	5184294AE
		14/16	All	Temperature Sensors	68105583AF
24	Oil Filter	12/13	3.6L		68079744AB
		14/18	All		68191349AA
25	Oil Pickup Tube O-Ring	12/18	All		5184908AB
26	Oil Filter Adapter O-Ring Kit	12/18	3.6L		68166067AA
27	Oil Filter Housing Repair Kit	12/13	3.6L	Includes Internal Valve, Spring, Oil Filter, & O-Ring Set	5184294RK
28	Oil Filter Bypass Valve	12/13	3.6L		917992
29	Oil Pan	12/18	All	Upper	68078951AC
30	Oil Pan	12/18	All	Lower	5184546AC
31	Oil Drain Plug	12/18	All		6506214AA

* This Part # not currently carried by Crown Automotive
Continue on next page

(Continued)

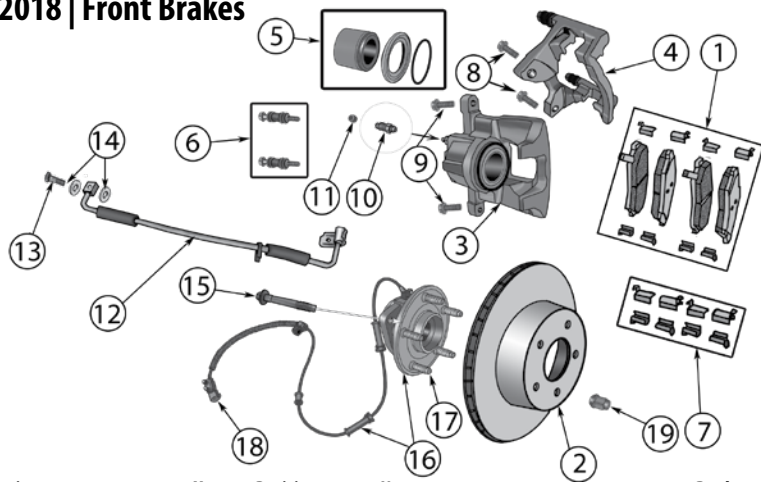
3.6 Liter Pentastar® Engine | JK 2012 - 2018

3.0 Liter Pentastar® Engine (Export) | JK 2014 - 2018



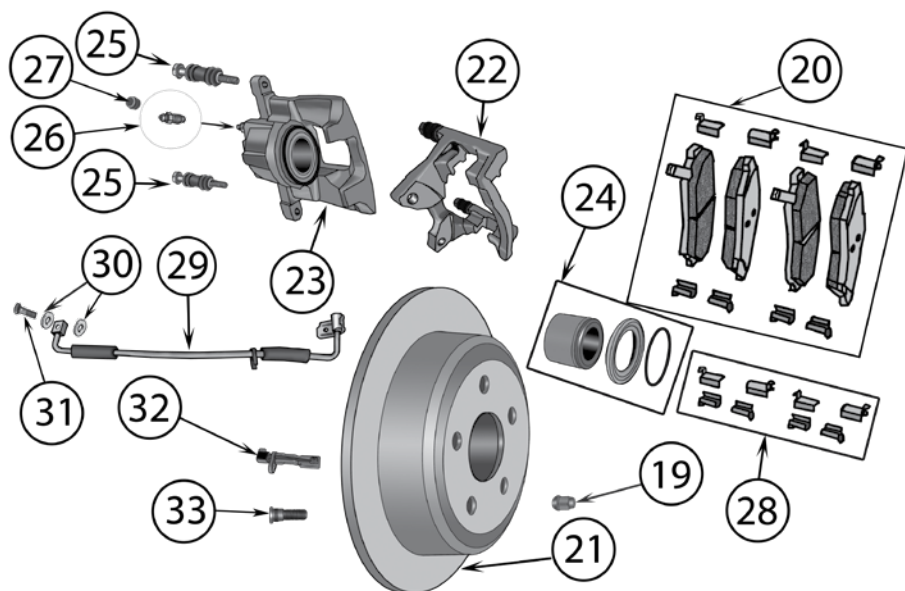
Item #	Description	Years	Engine	Comments	Replaces Part #
32	Oil Control Valve	12/18	All	Left or Right; Intake or Exhaust	5184150AF
33	Timing Chain	12/18	All	Secondary; Left or Right	5184352AF
34	Timing Chain Guide	12/18	All	Secondary; Right	5047791AA
35	Timing Chain Tensioner	12/18	All	Secondary; Left	5184360AF
36	Timing Chain Tensioner Arm	12/18	All	Secondary; Left	5047792AA
37	Timing Gear	12/18	All	Intermediate	5184357AE
38	Timing Gear Idler Shaft	12/18	All	Intermediate	5184359AB
39	Timing Chain Tensioner Arm	12/18	All	Secondary; Right	5047790AA
40	Timing Chain Tensioner	12/18	All	Secondary; Right	5184888AC
41	Timing Chain Guide	12/18	All	Secondary; Left	5047794AA
42	Timing Chain Guide	12/18	All	Primary	5184392AD
43	Timing Chain	12/18	All	Primary	5184355AF
44	Crankshaft Gear	12/18	All		5184356AE
45	Oil Pump Chain Tensioner	12/18	All		5184093AE
46	Timing Chain Tensioner	12/18	All	Primary	5184391AF
47	Oil Pump Chain	12/18	All		68312674AA
48	Oil Pump Drive Gear	12/18	All		5184273AD
49	Coolant Crossover Gasket	12/18	All		68083133AB
50	Engine Mount	12/18	All	Left	5147191AC
		12/18	All	Right	5147190AC
51	Timing Cover Gasket Set	14/18	3.0L		68228480AA
		12/15	3.6L		68228480AA
		16/18	3.6L		68078604AA
52	Engine Gasket Kit	12/18	All		68078554AD
53	Oil Pan Kit	12/18	All	Includes Oil Pan & RTV Sealant	5184546K
54	Tune-Up Kit	12/13	3.6L	Includes Air & Oil Filters & Spark Plugs	TK51
		14/18	3.6L	Includes Air & Oil Filters & Spark Plugs	TK52

JK 2007 - 2018 | Front Brakes



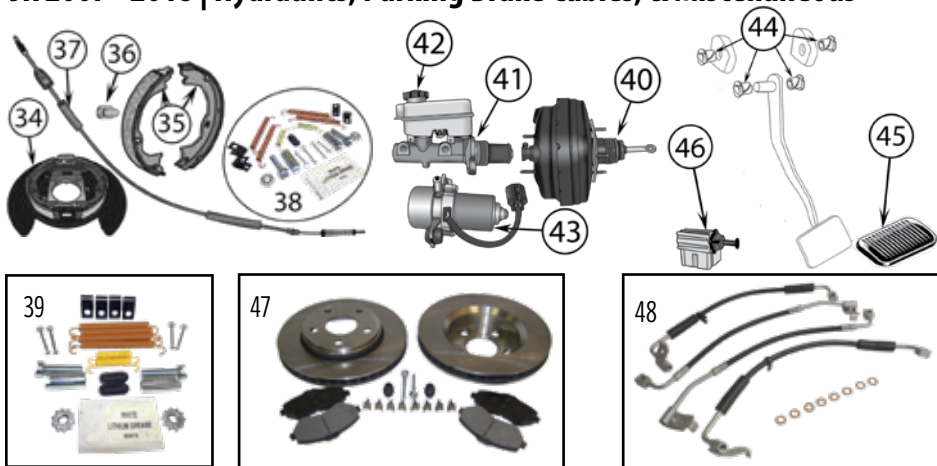
Item #	Description	Years	Position	Notes	Replaces Part #
Front					
1	Brake Pad Set	07/18	L & R	Includes Clips	68003701AA
2	Brake Rotor	07/18	L or R	11.89" Diameter	52060137AB
		08/18	L or R	13.09" Diameter	68040177AA
3	Brake Caliper	07/18	Right	11.89" Rotors; w/o Pads	68003697AA
		07/18	Left	11.89" Rotors; w/o Pads	68003707AA
		08/18	Right	13.09" Rotors; w/o Pads	68044863AA *
		08/18	Left	13.09" Rotors; w/o Pads	68044862AA *
4	Caliper Bracket	07/18	L or R	11.89" Rotors	68003699AA
5	Caliper Rebuild Kit	07/18	L or R	Includes 1 Piston, 1 Seal, & 1 Boot	68003698AA
6	Caliper Pin Kit	07/18	L or R	11.89" Rotors; Includes 2 Pins, & 2 Boots	68003706AA
		08/18	L or R	13.09" Rotors; Includes 2 Pins, 2 Boots, & 2 Bolts	68049018AA
7	Brake Pad Spring Kit	07/18	L & R	Includes 8 Springs	68003705AA
8	Caliper Bracket Bolt	07/18	L or R	M14 X 1.5 X 40 Flanged Hex Bolt	6104257AA
9	Caliper Mounting Bolt	07/18	L or R	M8 X 1.25 X 20mm	5143356AC
10	Bleeder Screw	07/18	L or R	M10 X 1 X 29.2mm	5093343AA
11	Bleeder Screw Cap	07/11	L or R		5093278AB
12	Brake Hose	07/10	Left		52060045AE
		11/18	Left		68171943AD
		07/10	Right		52060044AE
		11/18	Right		68171944AD
13	Brake Hose Bolt	07/18	L or R	M10 X 1 X 24mm	6508914AA
14	Brake Hose Washer	07/18	L or R		6502114
15	Knuckle to Hub Bolt	07/18	L or R	6 Required	5012436AB
16	Hub Assembly	07/10	L or R	Includes Wheel Speed Sensor	52060398AC
		11/18	L or R	Includes Wheel Speed Sensor	52060398AD
17	Wheel Stud	07/18	L or R		68003282AA
18	Wheel Speed Sensor	07/18	L or R	50" Long	68003281AC
19	Wheel Nut	07/18	For R	Black; 1/2"-20 Threads	J4006956BLK
		07/18	For R	Black; Set of 20	4006955BLKK
		07/18	For R	Stainless Capped; 1/2"-20 Threads	J4006956
		07/18	For R	Stainless Capped; Set of 20	4006956K

* This part is not currently carried by Crown Automotive
Continued on next page



Item #	Description	Years	Position	Notes	Replaces Part #
Rear					
20	Brake Pad Set	07/18	L & R	Includes Clips	68003776AA
21	Brake Rotor	07/18	L or R		52060147AA
22	Caliper Bracket	07/18	L or R		68003775AA
23	Brake Caliper	07/18	Left	w/o Pads	68003774AA
		07/18	Right	w/o Pads	68003778AA
24	Caliper Rebuild Kit	07/18	L or R	Includes 1 Piston, 1 Seal, & 1 Boot	68003882AA
25	Caliper Pin Kit	07/18	L or R	Includes 2 Pins, & 2 Boots	68003777AA
26	Bleeder Screw	07/18	L or R	M10 X1 X 29.2mm	5093343AA
27	Bleeder Screw Cap	07/11	L or R		5093278AB
28	Brake Pad Spring Kit	07/18	L & R	Includes 8 Springs	68003705AA
29	Brake Hose	07/18	Right		52059884AE
		07/18	Left		52059885AF
30	Brake Hose Washer	07/18	L or R		6502114
31	Brake Hose Bolt	07/18	L or R	M10 X1 X 24mm	6508914AA
32	Wheel Speed Sensor	07/18	L or R		52125003AB
33	Wheel Stud	07/18	L or R	1/2"-20 Thread	6036424AA

JK 2007 - 2018 | Hydraulics, Parking Brake Cables, & Miscellaneous



Item #	Description	Years	Position	Notes	Replaces Part #
Hydraulics, Parking Brake Cables, & Miscellaneous					
34	Backing Plate Assembly	07/18	L or R		52125175AA
35	Parking Brake Shoe Set	07/18	L & R		68003589AA
36	Parking Brake Adjusting Plug	07/18	L or R		J3201957
37	Parking Brake Cable	07/18	L or R	2-Door	52059891AF
		07/18	L or R	4-Door	52060204AF
38	Parking Brake Hardware Kit	07/18	L & R	Includes Springs, Pins, & Adjusters	68003589HK
39	Parking Brake Hardware Master Kit	07/18	L & R	Includes Springs, Pins, Adjusters & Clips	68003602MK
40	Brake Booster	07/10		w/11.89" Front Rotors	68003619AA
		11/18		w/11.89" Front Rotors	68068521AA *
		09/11		w/13" Front Rotors	68045999AA *
41	Master Cylinder	07/18		w/11.89" Front Rotors	68057474AA
		07/18		w/13" Front Rotors; 1.1/16" Bore	68091278AB
42	Master Cylinder Cap	07/18			4683656
43	Brake Booster Vacuum Pump	12/18		w/3.6L Engine	4581586AB
44	Pedal Bushing	07/18		4 Required for Automatic Transmission	52010309AB
				8 Required for Manual Transmission	
45	Brake Pedal Pad	07/18		w/ Manual Transmission; 2.5" Wide	52002750
		07/18		w/ Automatic Transmission	68031956AA
46	Brake Light Switch	07/18			56042023
Kits & Upgrades					
47	Disc Brake Service Kit	07/18	Front	w/11.89" Rotors; Includes Pads, Rotors, Springs, Pins, & Boots	52060137K
		07/18	Rear	Includes Pads, Rotors, Parking Brake Shoes, & Hardware	52060147K
48	Brake Hose Kit	07/10	L & R, F & R	Includes Front & Rear Hoses & Washers	BHK1
		11/18	L & R, F & R	Includes Front & Rear Hoses & Washers	BHK2

* This part is not currently carried by Crown Automotive

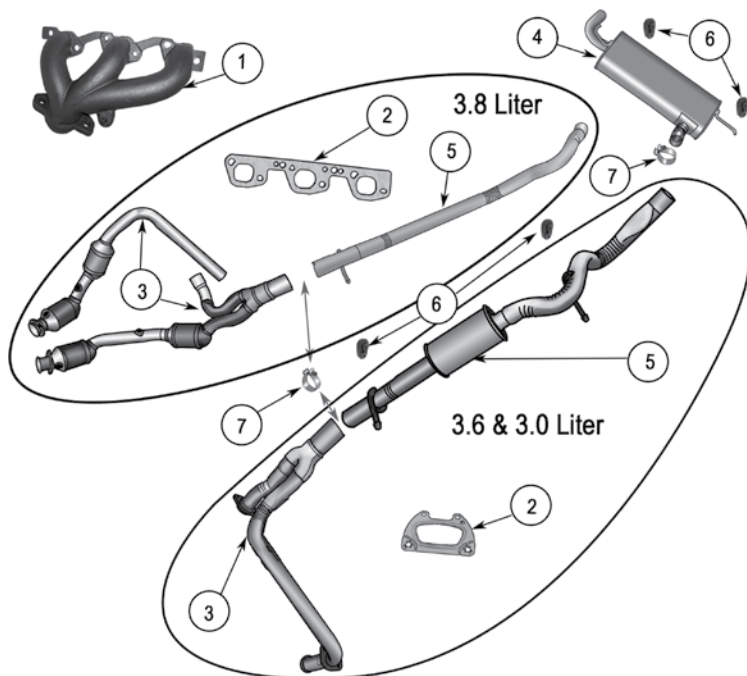


Item #	Description	Years	Comments	Replaces Part #
1	Lug Nut	07/18	1/2"-20 Stainless Capped Lug Nut	J4006956
		07/18	1/2"-20 Open-Ended Lug Nut	J0635516
		07/18	1/2"-20 Black Capped Lug Nut	J4006956BLK
	Lug Nut Kit	07/18	Includes Twenty 1/2"-20 Black Capped Lug Nuts	4006956BLKK
		07/18	Includes Twenty 1/2"-20 Stainless Capped Lug Nuts	4006956K
2	TPMS Sensor	07/11	Non-Export Only	56029479AB
		08/11	Export Only	56029481AB
		2012		56029481AB
		13/18		56029398AB
3	TPMS Valve Stem	07/18	Includes Valve Stem and Torx® Screw	68058766AA
4	Valve Stem	07/18	w/o TPMS	2073355
5	Lug Wrench	07/18		52124170AA
6	Wheel Stud	07/18	Front - 1/2"-20 Threads	68003282AA
		07/18	Rear - 1/2"-20 Threads	6036424AA

JK 2007 - 2018



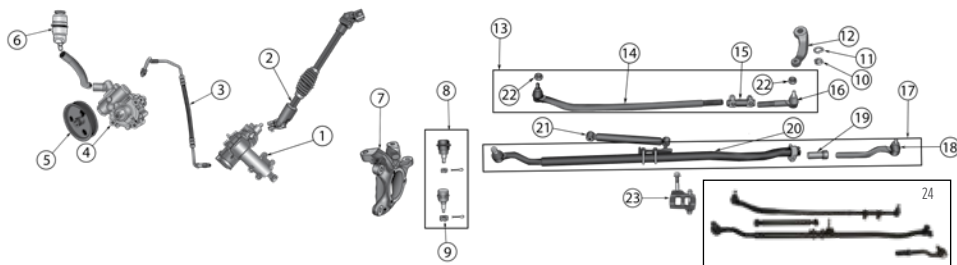
Item #	Description	Years	Position	Notes	Replaces Part #
1	Wiper Blade	07/18	Front L or R	15"	68002390AA
		07/18	Rear	12"; w/ Hard Top	68018929AA
2	Wiper Arm	07/18	Front L or R	w/ LHD	68002389AA
3	Wiper Arm & Blade	07/18	Rear		68002490AB
4	Wiper Motor Assembly	07/18	Front	Includes Wiper Motor & Linkage Assembly	55077859AC
5	Wiper Motor	07/18	Front		68002388AB
6	Windshield Washer Hose	07/18	Front		55078127AG
7	Windshield Reservoir Cap	07/18	Front		55077261AA
8	Windshield Washer Nozzle	07/12	Front L or R		55156728AB
		13/18	Front L or R		68164356AB
	Windshield Washer Nozzle Set	07/12	Front L & R	Includes Left & Right Nozzle	55156728K
		13/18	Front L & R	Includes Left & Right Nozzle	68164356K
9	Windshield Washer Pump	08/18	Front	w/ Rear Wiper	5179153AC
		07/18	Front	w/o Rear Wiper	5152076AC
10	Wiper Switch	07/18		w/o Rear Wiper	68003214AD
		07/18		w/ Rear Wiper	68003215AD



Item #	Description	Engine	Years	Comments	Replaces Part #
1	Manifold, Exhaust	3.8L	07/11	Left	4666024AD
		3.8L	07/11	Right	4666026AB
2	Gasket, Manifold	3.8L	07/11	Left or Right	4892409AA
		3.6L	12/18	Left or Right	68093232AA
		3.0L Gas	14/18	Left or Right	68093232AA
3	Front Pipe, Exhaust	3.8L	07/09	Includes 4 Catalytic Converters	52059930AH
		3.8L	10/11	Converters	68040901AB *
		3.6L	12/18	Includes 4 Catalytic Converters	68085142AB
		3.0L Gas	14/18	Converters	68085142AB
4	Muffler	3.8L	07/11	Includes Tailpipe	52059937AI
		3.6L	12/18		5147215AD
		3.0L Gas	14/18		5147215AD
		2.8L Diesel	07/18	Includes Tailpipe	52059937AI
5	Rear Pipe, Exhaust	3.8L	07/11	2-Door	52059939AG
		3.8L	07/11	4-Door	52059938AI
		3.6L	12/18	2-Door, Includes Resonator	5147214AD
		3.6L	12/18	4-Door, Includes Resonator	5147213AD
		3.0L Gas	14/18	2-Door, Includes Resonator	5147214AD
		3.0L Gas	14/18	4-Door, Includes Resonator	5147213AD
6	Insulator, Exhaust	All	07/18	4 Required	52059929AA
7	Clamp, Exhaust	All	07/18		55398182AA

* This Part # not currently carried by Crown Automotive

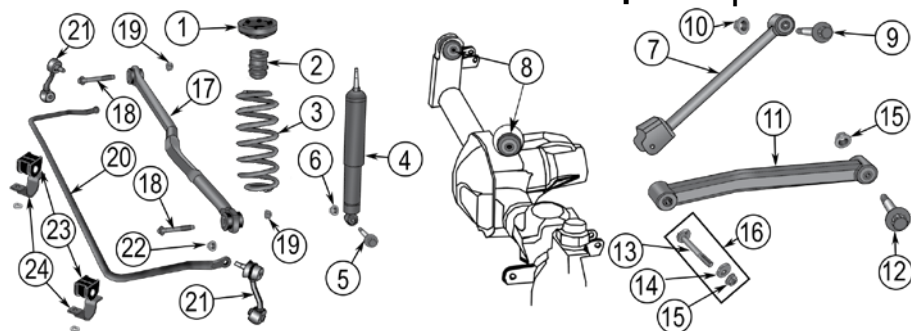
JK 2007 - 2018



Item #	Description	Years	LHD / RHD	Comments	Replaces Part #
1	Steering Gear Assembly	07/18	LHD	2-Door	68052897AC
		07/18	LHD	4-Door	52126348AD
		07/09	RHD	2-Door	52059898AD *
		10/14	RHD	2-Door	68052898AC *
		07/18	RHD	4-Door	52126349AE
2	Steering Shaft	07/18	All	Lower	55351281AE
3	Power Steering Pressure Hose	07/11	LHD	w/ 3.8L Engine	52059900AF
		07/11	RHD	w/ 3.8L Engine	52059901AD
4	Power Steering Pump	07/11	All	w/ 3.8L Engine; Includes Pulley	52059899AE
		07/18	All	w/ 2.8L Diesel Engine; Includes Pulley	52060171AE *
		12/18	All	w/ 3.6L Engine; Includes Pulley	5154400AC
		14/18	All	w/ 3.0L Gasoline Engine; Includes Pulley	5154400AC
5	Power Steering Pump Pulley	07/11	All	w/ 3.8L Engine	53032956AA
		07/18	All	w/ 2.8L Diesel Engine	53034094AA
6	Power Steering Reservoir	07/18	All		52126151AG *
7	Steering Knuckle	07/18	LHD	Left	68004087AA
		07/18	LHD	Right	68004086AA
8	Ball Joint Set	07/18	All	Includes 1 Upper & 1 Lower Ball Joint w/ Hardware	68004085AA
9	Ball Joint Nut	07/18	All	Lower	J8123318
10	Pitman Arm Nut	07/18	All		J3200501
11	Pitman Arm Lock Washer	07/18	All		S0103336
12	Pitman Arm	07/18	LHD		52060056AC
		07/18	RHD		52060057AC
13	Drag Link Kit	07/18	LHD	Includes 2 Tie Rod Ends & Adjuster w/ Hardware	52060049K
14	Tie Rod End	07/18	LHD	Drag Link; At Knuckle	52060048AD
		07/18	RHD	Drag Link; At Knuckle	52126058AD
15	Steering Adjuster	07/18	LHD	Drag Link; Includes Sleeve, Clamps, Bolts, & Nuts	52126122AC
		07/18	RHD	Drag Link; Includes Sleeve, Clamps, Bolts, & Nuts	52126123AC
16	Tie Rod End	07/18	All	Drag Link; At Pitman Arm	52060049AE
17	Tie Rod Assembly	07/18	LHD	Includes 2 Tie Rod Ends & Adjuster w/ Hardware	52060052K
18	Tie Rod End	07/18	LHD	Tie Rod; Left Side; 11" Long	52060053AE
		07/18	RHD	Tie Rod; Left Side	52126113AE
19	Steering Adjuster	07/18	All	Tie Rod	52060054AB
20	Tie Rod End	07/18	LHD	Tie Rod; Right Side; 50.5" Long	52060052AF
		07/18	RHD	Tie Rod; Right Side	52126114AC
21	Steering Stabilizer	07/18	All		52060058AE
22	Tie Rod End Nut	07/18	All	Drag Link to Knuckle or Pitman Arm: M14 X1.5	6505623AA
23	Steering Stabilizer Bracket	07/18	LHD		68066693AA
24	Complete Steering Kit	07/18	LHD	Includes #13, 18, & 21	SK1
		07/18	RHD	Includes #13, 18, & 21	SK1RHD

* This Part # not currently carried by Crown Automotive

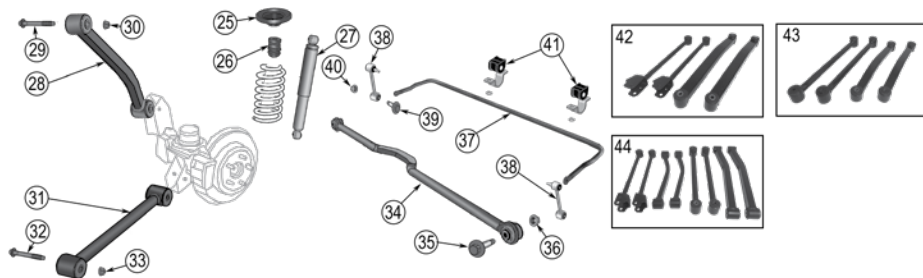
Front Suspension | JK 2007 - 2018



Item #	Description	Years	Engine	Position	Comments	Replaces Part #
1	Coil Spring Isolator	07/18	All	Upper		52059912AC
2	Bump Stop	07/11 12/18	3.8L 3.6L	Lor R Lor R		52060428AB 52060428AB
3	Coil Spring	07/18	All	Lor R	w/ Unlimited & Sport Packages w/ Unlimited & Rubicon Pkgs. w/o Steel Bumpers w/ Unlimited & Sahara Packages w/o Unltd. & w/ Rubicon Pkgs. w/o Steel Bumpers	52126317AC
4	Shock Absorber	07/11 07/11 07/18 12/18	3.8L 3.8L All Gas 3.6L	Lor R Lor R Lor R Lor R	w/ Standard Suspension w/ Performance Suspension w/ Heavy Duty Suspension w/ Performance Suspension	68029954AA 68087359AG 68027792AA 68087359AG
5	Shock Absorber Bolt	07/18	All	Lower	M12 X 1.5 X 70mm	6104242AA *
6	Shock Absorber Nut	07/18	All	Lower	M12 X 1.5; Flanged Locking Nut	6104718AA
7	Upper Control Arm	07/18	All	Lor R	Includes Bushing	52059976AC
8	Control Arm Bushing	07/18	All	Upper	Axle End	52060138AA
9	Control Arm Bolt	07/18	All	Upper	Axle or Frame End; M12 X 1.5 X 80mm	6104243AA *
10	Control Arm Nut	07/18	All	Upper	Axle End; M12 X 1.5; Flanged Locking Nut	6104718AA
11	Lower Control Arm	07/18	All	Lor R	Includes Bushings	52059979AC
12	Control Arm Bolt	07/18	All	Lower	Axle or Frame End; M14 X 1.5 X 100mm	6104266AA *
13	Control Arm Cam Bolt	07/18	All	Lower	w/ Offset Cam; M14 X 2 X 112mm	6504238
14	Control Arm Cam Bolt Washer	07/18	All	Lower		6504236AB
15	Control Arm Nut	07/18 07/18	All All	Lower Lower	Axle or Frame End Except Cam Bolt w/ Cam Bolt; M14 X 2; Flanged Locking Nut	6104719AA 6502698
16	Control Arm Cam Bolt Kit	07/18	All	Lower	Includes Cam Bolt, Cam Washer, & Nut	6504238K
17	Track Bar	07/18 07/18	All All	LHD RHD		52059982AD 52059983AD
18	Track Bar Bolt	07/18 07/18	All All		to Frame; M14 X 1.5 X 70mm to Axle; M14 X 1.5 X 70mm	6104263AA * 6512061AA *
19	Track Bar Nut	07/18	All		to Frame; M14 X 1.5; Flanged Locking Nut	6104719AA
20	Sway Bar	07/18	All			52059971AC *
21	Sway Bar Link	07/18	All	Lor R		52059975AC
22	Sway Bar Link Nut	07/18	All		to Axle; M10 X 1.5; Flanged Locking Nut	6104718AA
23	Sway Bar Bushing	2007 2007 08/18	All All All	Lor R Lor R Lor R	w/ Rubicon Package w/o Rubicon Package	52060299AD 52059973AC 52059973AC
24	Sway Bar Bushing Bracket	07/18	All	Lor R		52110141AB

* This part is not currently carried by Crown Automotive

JK 2007 - 2018 | Rear Suspension & Kits



Item #	Description	Years	Engine	Position	Comments	Replaces Part #
25	Coil Spring Isolator	07/18	All	L or R	Upper	52059999AC
26	Bump Stop	07/18	All	L or R	w/ 4WD	52060423AB
		07/11	All	L or R	w/ 2WD	52126207AA *
27	Shock Absorber	07/08	3.8L	L or R	Until 1/13/2008; w/ 4WD w/ Std. Suspension	68029960AA
		07/11	3.8L	L or R	w/ Heavy Duty Suspension	68027797AA
		07/18	All	L or R	w/ Performance Suspension	68087362AC
		12/18	3.6L	L or R	w/ Heavy Duty Suspension	68027797AA
		07/18	2.8L Dsl.	L or R		68027795AA
28	Upper Control Arm	07/18	All	L or R	Includes Bushings	52060015AD
29	Control Arm Bolt	07/18	All	Upper	to Frame or Axle; M14 X 1.5 X 90mm	6512062AA *
30	Control Arm Nut	07/18	All	Upper	to Axle; M14 X 1.5	6508598AA *
		07/18	All	Upper	to Frame; M14 X 1.5	6508786AA *
31	Lower Control Arm	07/18	All	L or R	Includes Bushings	52060021AD
32	Control Arm Bolt	07/18	All	Lower	to Axle; M14 X 1.5 X 100mm	6512063AA *
		07/18	All	Lower	to Frame; M14 X 1.5 X 100mm	6104266AA *
33	Control Arm Nut	07/18	All	Lower	to Axle; M14 X 1.5	6508598AA *
		07/18	All	Lower	to Frame; M14 X 1.5	6508598AA *
34	Track Bar	07/18	All			52060024AE
35	Track Bar Bolt	07/18	All		to Frame; M14 X 1.5 X 70mm	6104263AA *
		07/18	All		to Axle; M14 X 1.5 X 70mm	6512061AA *
36	Track Bar Nut	07/18	All		to Frame; M14 X 1.5; Flanged Locking Nut	6104719AA
37	Sway Bar	07/18	All		w/ Standard Suspension	68067125AA *
		07/18	All		w/ Performance Suspension	68067126AA *
38	Sway Bar Link	07/18	All	L or R		52060011AB
39	Sway Bar Link Bolt	07/18	All		to Axle; M12 X 1.5 X 75mm	6512065AA *
40	Sway Bar Link Nut	07/18	All		to Frame or Axle; M12 X 1.5; Flanged Locking Nut	6104718AA
41	Sway Bar Bushing	07/18	All	L or R	w/o Rubicon Package	52060013AA
		07/18	All	L or R	w/ Rubicon Package	52060012AC
Kits & Upgrades						
42	Control Arm Kit	07/18	All	Front	Left & Right, Upper & Lower	CAK14
43	Control Arm Kit	07/18	All	Rear	Left & Right, Upper & Lower	CAK15
44	Control Arm Kit	07/18	All	F & R	Left & Right, Upper & Lower	CAK16

* This part is not currently carried by Crown Automotive



Item #	Description	Year	Transmission	Notes	Replaces Part #
1	Accumulator Piston	07/11	42RLE		4446620AD
		07/09	545RFE		4446620AD
2	Accumulator Piston Seal	07/11	42RLE		4446544
		07/09	545RFE		4446544
3	Differential Carrier Bearing Cup	07/11	42RLE	Differential Bearing Race (Inside Transmission)	4567022
4	Planetary Bearing	07/11	42RLE	Rear	4567025AB
5	Intermediate Plate	11/18	W5A580	Located Between Bellhousing & Clutch	52108147AA
6	Oil Pump Seal	07/10	545RFE	Located on the bottom of the oil pump	4799964AB
		11/18	W5A580		52108424AA
7	Output Seal	07/11	42RLE	w/ 4WD	J8134680
8	Pressure Sensor Transducer	07/10	545RFE		4799758AD
		07/11	42RLE		5078336AA
9	Transmission Filter	11/18	W5A580		52108325AA
		07/11	42RLE		52852913AB
		07/10	545RFE	w/ 4WD; Primary Transmission Filter	4799507AA
		07/10	545RFE	Spin-on	4799662
10	Transmission Filter Kit	07/10	545RFE	w/ 4WD; Includes Primary Filter, Cooler Filter (Spin-on) and Gasket	5179267AC
		07/10	42RLE	Includes Filter and Gasket	52852913K
11	Transmission Speed Sensor Module	11/18	W5A580		52108308AC

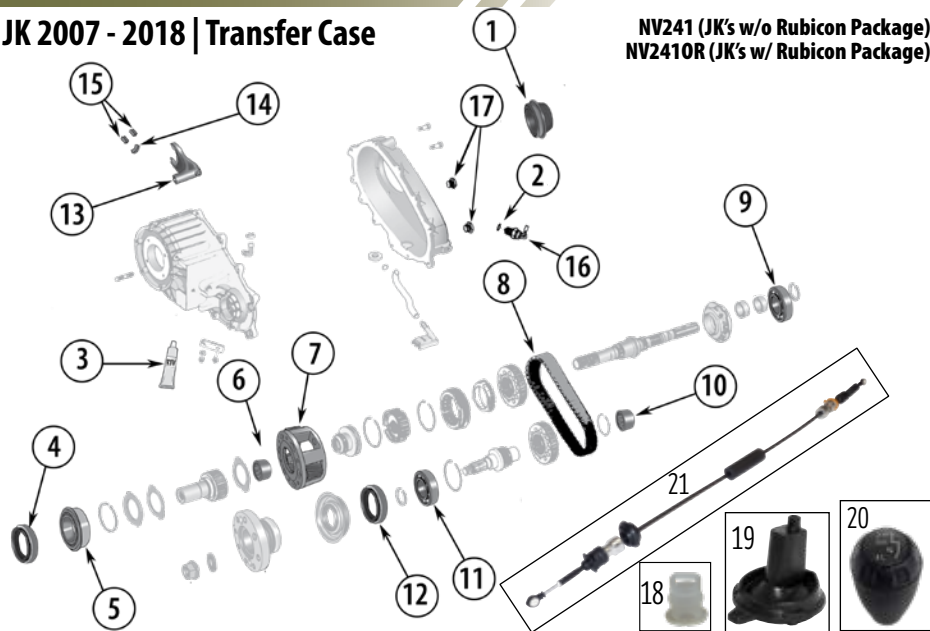
JK 2007 - 2018



Item #	Description	Year	Transmission	Notes	Replaces Part #
12	Transmission Input Speed Sensor	07/11	42RLE		4799061AB
		07/11	545RFE		4799061AB
13	Transmission Output Speed Sensor	07/11	42RLE		52854001AA
14	Transmission Overhaul Kit	2007	545RFE		5014221AC
15	Transmission Pan	07/09	545RFE		68065923AA
		07/11	42RLE		52852912AC
		2010	545RFE		4736676AA
		11/18	W5A580		52108327AC
16	Transmission Pan Gasket	11/18	W5A580		52108332AA
17	Transmission Pan Kit	07/09	545RFE	Includes Oil Pan & Gasket, Primary Filter, Cooler Filter (Spin-On)	68065923K
		07/11	42RLE	Includes Oil Pan, Filter & RTV	52852912K
		11/18	W5A580	Includes Oil Pan & Gasket, Oil Filter	52108327K
18	Transmission Cooler Hose Set	07/11	42RLE	w/ 3.8L Engine; Supply & Return Hoses	55056624AD
		12/18	W5A580	w/ 3.6L Engine; Supply & Return Hoses	55111450AE
		14/18	W5A580	w/ 3.0L Gas Engine; Supply & Return Hoses	55111450AE
19	Transmission Cooler Jumper Line Set	07/11	See Note	w/ 42RLE, 545RFE, W5A580; w/ 3.8L Engine	68003503AA
		07/11	W5A580	w/ 2.8L Diesel Engine	68003503AA
		12/18	W5A580	w/ 3.6L Engine	68143893AA
		14/18	W5A580	w/ 3.0L Gas Engine	68143893AA
20	Transmission Shift Pressure Solenoid	11/18	W5A580		5138838AA

JK 2007 - 2018 | Transfer Case






NV241 (JK's w/o Rubicon Package)
NV241OR (JK's w/ Rubicon Package)






Item #	Description	Year	Transfer Case	Comments	Replaces Part #
1	Output Seal	All	241, 241OR	Rear	5013019AA
2	Transfer Case Switch Seal	All	241, 241OR		4338956
3	RTV Sealant	All	241, 241OR		J8993317
4	Input Seal	All	241, 241OR		5019020AA
5	Input Shaft Bearing	All	241, 241OR	Front	5072458AA
6	Input Shaft Bearing	All	241OR	Rear	4746127
7	Planetary Gear	All	241		4796903*
8	Transfer Case Chain	07/09	241, 241OR	w/ 2.8L Diesel Engine	5080215AA
		10/11	241, 241OR	w/ 2.8L Diesel w/ 40 Tooth Front Output Sprocket	5080215AA
		10/11	241, 241OR	w/ 2.8L Diesel w/ 47 Tooth Front Output Sprocket	5135692AA
		12/18	241, 241OR	w/ 2.8L Diesel	5080215AA
		07/11	241, 241OR	w/ 3.8L Engine	5080215AA
		12/18	241, 241OR	w/ 3.6L Engine	5135692AA
		14/18	241, 241OR	w/ 3.0L Gas Engine	5135692AA
9	Output Shaft Bearing	All	241, 241OR	Rear Output; Rear Bearing	J8136626
10	Output Shaft Bearing	All	241, 241OR	Front Output; Rear Bearing	4269189
11	Output Shaft Bearing	All	241, 241OR	Front Output; Front Bearing	J8136626
12	Output Seal	All	241, 241OR	Front	4798125
13	Range Shift Fork	All	241		4638913
14	Shift Fork Insert	All	241, 241OR	Mode Fork; Center Pad	15221
15	Shift Fork Insert	All	241, 241OR	Mode or Range Fork; Sides	13795
16	Transfer Case Switch	All	241, 241OR	5-Position	5083138AA
17	Transfer Case Plug	All	241, 241OR	Fill or Drain Plug	68001627AA
18	Shifter Bushing, Transmission Cable	All	241, 241OR	At Shifter	68064273AB
19	Shift Boot	All	241, 241OR	w/ Automatic Transmission	52060165AE
20	Shift Knob	All	All	Vinyl	52060451AF
21	Transfer Case Shift Cable	All	241, 241OR	w/ Automatic Transmission	52060462AG

* This part is not currently carried by Crown Automotive








NSG370 Manual Transmission | JK 2007 - 2018

				
Item #	Description	Comments	Replaces Part #	
1	Front Input Bearing Retainer		5159176AA	
2	Input Seal		5099840AA	
3	Input Shaft Bearing	Rear	5096465AA	
4	Countershaft Bearing	Front	68080335AA	
5	Main Shaft Bearing	Front or Rear	68083225AA	

EMISSIONS

1		2		3	
Item #	Description	Years	Engine	Replaces Part #	
1	PCV Valve	07/11 12/18 14/18	3.8L 3.6L 3.0L Gas	4648973AD 68083202AC 68083202AC	
2	EGR Valve	07/11	3.8	4593896AB	
3	Vapor Canister Seal	07/18	All Gas	52129436AA	

LOCK CYLINDERS & KEYS

						
Item #	Description	Years	Comments	Replaces Part #		
1	Ignition Cylinder Repair Kit	07/18		5179511AA		
2	Ignition Switch	07/18		4685719AG		
3	Console Lock Cylinder	07/09	Uncoded, Key & Tumblers Not Included	4746305		
4	Door Lock Cylinder	07/18		4864651		
5	Tailgate Lock Cylinder	07/18		4864651		
6	Lock Cylinder Retainer	07/18	Doors and Tailgate	55295904		
7	Key Blank	07/18	w/ Transponder	5143553AA		
8	Keyless Remote Battery	07/18		5066241AB		

